

Ollscoil
Teicneolaíochta
an Atlantaigh

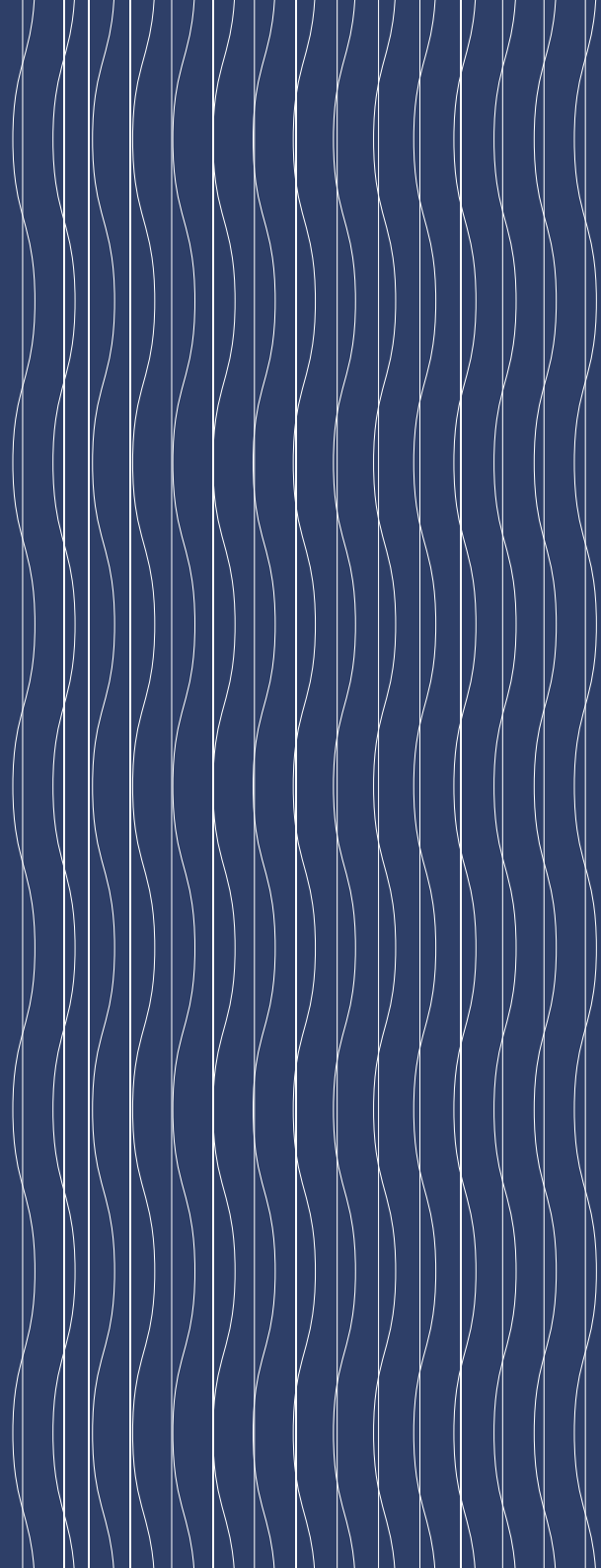
Atlantic
Technological
University

Student Guide

2024 - 2025



ATU Sligo



Contents

Welcome	6
---------	---

The A to Z of Student Life

Academic Support Centres	9
Accommodation	9
Alcohol in College	9
ATU Respect	10
Campus Facilities, Breakages or Faults	10
Campus Watch	11
Careers Service	11
Car Parking	11
Clubs and Societies	13
Code of Conduct	13
Concourse	14
Consent	14
Cycling Facilities	16
Dining	17
Disability	17
Disclosure	19
Dyslexia	20
Erasmus+	20
Equality, Diversity and Inclusion (EDI)	20
Examinations	21
First Year Experience	21
Gender Identity and Expression	22

Green Campus	23
Health Service	24
Healthy Campus	24
Independence	24
Induction	24
IT Services Helpdesk	25
Laptop and Phone Charging Lockers	25
LinkedIn Learning	25
Lost Property	25
Mental Health	25
Money Matters	26
Moodle	27
Mothers' Room	27
Notices and Posters	28
Personal Accident Insurance	28
Personal Post	29
Personal Problems	29
Places of Worship in Sligo	30
Public Transport	33
Semester	33
Sexual Violence and Sexual Harassment	34
Speak Out	35
Sports and Recreation Facilities	36
Sports Scholarships	37
Student Centre	38

Student ID Card	38
Student Progression	39
Student Portal	40
Students' Union	40
Thinking of Leaving your Course Early?	41
Turitin	42
Useful Websites	43
Values and Rights at ATU Sligo	45

The Important Stuff

University Rules and Regulations	47
Student Code	47
Student Registration	47
Child Protection	48
Complaints	49
Course/Semester Deferrals or Withdrawals	50
Data Protection	50
Examinations	51
Filming and Photography	55
Freedom of Information	55
Fitness to Practice	56
Garda Vetting of Students	57
Grants and Fees	58
Students with Criminal Convictions	59
IT Services	60
Student Health and Safety Guidelines	63

Directory of Supports and Services

Organisation Chart	68/69
Directory of Student Supports and Services	71
Academic Writing Centre	72
Maths & Engineering Support Centre	74
Access Office	76
Disability Support Office	78
Careers Service	80
International Office	82
Pastoral Care Service	85
RESPECT - Preventing Gender Based Violence	86
Student Counselling Service	88
Student Health Service	90
Student Success	93
Wellbeing	94
Yeats Library	95
Students' Union	96
Campus Map	100

President's welcome



Hello and Welcome to ATU
Ba mhaith liom fáilte
mór a chur romhaibh ar
fad anseo go dtí Ollscoil
Teichneolaíochta an
Atlantaigh ... and to say
a big THANK YOU for
choosing to study in
Atlantic Technological
University!

It is my great pleasure to welcome you to one of our nine campuses. We are one of the largest providers of third level education in Ireland with over 24,000 students, and you are now part of this success story for our future.

At ATU, students benefit from our very positive staff-student interactions and learn through small classes, hands-on practical work, mentoring, internships, and opportunities to study abroad, and this ethos remains strong even as we have joined forces across the three former institutes of technology.

As you start the new academic year with us, I want you to remember some key pieces of advice: connect with each other and engage with your academic Department and School. A significant part of our examination and assessment involves continuous assessment and you can improve your chances of good results by ensuring you maintain a high attendance rate throughout the year. Most of all, do engage with the campaigns and activities organised for you during the induction programme and throughout the year (www.atu.ie/welcome). Participate in Clubs and Societies where possible and follow your Students' Union on social media to keep up to date and stay connected.

Your third level journey can yield huge rewards for you after you graduate in a few short years from now. Work hard while you are with us, but make sure you also enjoy that journey.

Stay well, look after each other, and I hope to meet you along the way!

Dr Orla Flynn
Uachtarán/President

Welcome to ATU Sligo



On behalf of everyone in Student Support Services, I would like to welcome you to ATU Sligo whether you are starting your first year or returning to campus.

Regardless of what stage you are at, this guide has been prepared as a resource for throughout the year - read it, keep it carefully and refer to it regularly.

Third level education is about more than academic study and passing exams, it is about widening your personal and social experience. This guide provides you with information on Student Life in general, the fun stuff as well as the equally important rules and regulations and the Student Support Services that are there to help and support you in reaching your potential.

There are many wonderful facilities and supports available for students in ATU Sligo, detailed in this guidebook, but ultimately our greatest resource is our student population. Most students face the same challenges and have similar experiences - reach out to your class, house mates and across the college and your ATU Sligo experience will be all the richer for it.

The Students' Union along with Clubs and Societies run many activities which will help you participate in college life. Becoming a member of a club or society is a great way to get to know other people. Check out what is available at sligo.atulife.ie and during the year, please keep us updated of your achievements.

In addition to your college friends and academic staff, there are a range of people in ATU Sligo here to help, and you can speak to many of these in total confidence. We have an emphasis on wellness and there are a range of activities planned to promote your physical and mental health.

Contact details for all can be found in the Directory of Student Supports and Services at the back of this guide. Please be sure to access the ATU Sligo Student Portal throughout the academic year where a wealth of information is at your fingertips.

Wishing you a very happy and successful 2024/25 college year.

Catherine Mc Nelis
Student Support Services Officer
E: studentsupport.sligo@atu.ie

Section 01

The A-Z of Student Life



Academic Support Centres

Whether you are new or returning to university, we understand that some students may benefit from additional academic support. That is why at ATU Sligo, our Academic Writing, Maths and Engineering Support Centres offer free support to all students. Located in the Learning Zone on the ground floor of the Yeats Library, our team of experienced tutors offer 1:1 appointment, both on campus and online, in a welcoming and supportive environment. Additionally, the centres provide a range of workshops, drop-in services and a wealth of online resources, all aimed at supporting you to achieve your academic potential. For more information go to:
www.atu.ie/sligo-writing-centre/
<https://tinyurl.com/ATU-Sligo>
<https://atu.ie/maths-engineering-support>

Accommodation

Sligo offers a range of purpose-built student accommodation, self-catering as well as full-board(digs) accommodation options for ATU Sligo students. The ATU Sligo Students' Union (ATUSSU) is your first point of contact when it comes to finding student accommodation. Emil Kindl, the full-time VP for Wellbeing & Engagement, manages all accommodation enquiries. Visit www.atussu.ie/rent for more information.

If you have any questions or need advice, call **071 914 1887** or email support@atussu.ie

Note: It is important that you satisfy yourself that the accommodation is suitable before entering into any agreement with a landlord. ATU Sligo and ATUSSU are not party to contracts between students and accommodation providers.

Alcohol in College

College life should include a lot of fun. For some students, moving away from home and participation in a college social life may mean an adjustment in their alcohol intake. It is therefore important to assess what your relationship with alcohol is.

You can use the HSE Alcohol Self-Assessment Tool at www2.hse.ie/wellbeing/alcohol/self-assessment-tool/#Start to identify what type of drinker you are and the impact of your drinking. Whatever you drink, you can find out what it's doing to your health on askaboutalcohol.ie

If as a result of taking this survey, or just generally, you have concerns about your alcohol consumption, there are a number of supports available within ATU Sligo such as the Student Counselling and Student Health Services and in the wider society to help you build a better relationship with alcohol.

In recognition that harmful alcohol consumption can be a matter for concern amongst students, ATU Sligo has developed an Alcohol Policy to proactively raise awareness and to prevent harm. The policy can be found at <https://www.atu.ie/sligo-documents-alcohol-policy>

ATU Respect

ATU recognises that all forms of gender-based violence are unacceptable and we are committed to creating, promoting, and maintaining a safe and respectful culture across ATU with zero-tolerance for all forms of gender-based violence.

Gender-based violence is any form of behaviour where force, threat or coercion is used to inflict physical, psychological, and/or economic harm on an individual. Gender-based violence includes acts of sexual violence such as rape, sexual assault, sexual harassment, image-based sexual abuse, and sexual coercion and extortion ('sextortion'). Gender-based violence also includes domestic violence, intimate partner abuse, and coercive control. While gender-based violence can be perpetrated against anyone, there is strong research evidence which shows that women and girls are disproportionately victimised, that perpetrators are most likely to be men, and that men who are victims are less likely to seek support.

In Ireland 52% of women and 28% of men in Ireland have been subjected to some form of sexual violence in their lifetime (CSO, 2022).

As part of our commitment to zero-tolerance we have developed the ATU RESPECT programme. This new programme is providing training, awareness and supports to all students and staff in ATU. We are growing a community of people across ATU who are confident and actively involved in preventing and responding to gender-based violence.

We all have a role to play in ending gender-based violence. If you'd like to get involved or if you have any questions or need support, please contact us: respect@atu.ie



RESPECT

Preventing Gender-Based Violence

Campus Facilities, Breakages or Faults

Please treat the campus and its facilities with respect. This includes furniture and equipment in lecture rooms and social areas as well as the recreational and other grounds of the college. Please do not leave litter around the grounds or in the buildings - use the bins provided.

Please report all breakages or faults to your lecturer or a member of staff so that they can raise a work request on the Estates helpdesk. Examples may include broken seats in lecture rooms, lights not working, faulty doors, blocked toilets, broken hand-dryers, sockets without power, etc.

Remember it is your university and everybody will appreciate your cooperation.

Campus Watch

You should always be aware of your personal security, the security of your residence and your personal property. The Campus Watch Gardaí are Louise Keogh and Enda Devenney who can be contacted on **071 914 2031**.

The campus watch booklet is not only available in English and Irish but is now also available in a range of international languages on the Garda.ie website at the following link:

www.garda.ie/en/crime-prevention/crime-prevention/campus-watch/

While within the college grounds, if you have any particular security concerns, please contact our Security Team at **087 637 9470**.

Careers Service

The Careers Office is available to help you to make decisions and consider your next steps. They can help you to explore progression options with your course and help you to apply for opportunities of interest, whenever and whatever they might be.

The Careers Office provides a blended service both on campus and online.

The Careers Office Moodle page provides useful tools and resources to support you at every stage of your career journey.

The Careers Office encourage everyone to 'Be Career Curious' and provide lots of opportunities for you to meet with employers throughout the academic year to grow your professional networks, to find out about their hiring plans and to secure jobs.

Car Parking

There are four car parks on campus providing spaces for 950 vehicles, with visitor, pay parking, pay and display and free parking. Free parking is available in the main car park in front of reception (Block A), and the carpark between the Apprentice Building (Block F) and Knocknarea Arena (Block P).

Tariffs apply in the following car parks;

Clarion Road Pay and Display Car Park

€1.00 for 1st hour (or part thereof), €2.00 for 2 hours or €2.50 for full day. Pay machines are located throughout the car park. Open time is 07:00 and tariff applies 09:00 - 17:00 and machines close at 17:00. Tickets cannot carry over to the following day. Credit / Debit Cards are the only form of payment.

Visitors Carpark / Pay on Exit Adjacent to student centre (Block H)

50c per hour (or part thereof) or €3.50 for full day.

The Pay machine is located in the Student Centre (Block H). Tariff applies Monday - Friday, 09.00 - 16.00. Ticket will not permit multiple entries/exits. Credit / Debit Cards are the only form of payment, and coins and notes are not accepted at the machine. Ticket must be inserted at the exit barrier within fifteen minutes of payment or it will time-out and the barrier will not lift.



Mobility Parking

Designated parking is provided throughout all carparks for people with limited mobility. Individuals using these parking bays must have the correct disability parking permit displayed to avoid having their car clamped.

Clamping

Please be aware that clamping is in operation. The Clamping Policy applies during all opening hours of the University and during academic holidays whilst staff, students or others are using the buildings. A fee of €50 is charged to release the clamp and a €200 charge is applied if the clamp is tampered with. You should contact Security to get the clamp released.

Prohibited Parking Areas

All areas denoted by double yellow lines

- Entrances & Exits
- Loading bays
- Grassed areas
- Footpaths
- Obstruction of other appropriately parked areas
- Obstruction of traffic
- Parking without due consideration to other campus users
- Parking without a valid ticket clearly displayed in the pay & display carpark at Clarion Road carpark
- Parking in Disabled area without a valid permit
- “Go Car” designated car spaces

- Anyone involved in practices or actions designed to evade the car park tariff or procedures
- Anyone involved in careless or unsafe driving practices

For more details go to ATU Sligo Wheel Clamping and Appeal Process <https://www.atu.ie/sligo-wheel-clamping-appeal-process>

Clubs and Societies

University life is not just about studying and passing examinations. It is also about widening your personal and social experiences. It is important that you make the effort to participate in the social life of the university. One effective way to get more involved is to join a club or society.

There is a wonderful variety of clubs and societies to choose from, check out www.sligo.atusulife.ie for more information, or scan the QR code.



Code of Conduct

ATU Sligo respects third level students as responsible members of the community and expects that each student will behave in a mature, reasonable, and honest manner. This is recognised in the Student Code.

Behaviour, which damages ATU Sligo's good name in the wider community or engaging in behaviour that causes ATU Sligo's reputation to come into disrepute is not acceptable. ATU Sligo's jurisdiction under the Student Code is not limited to its own property.

The Procedure for Dealing with Breaches of the Student Code allows for formal complaints to be made about a student(s) and for that to be dealt with in a serious, fair, and professional manner. For more information see Complaints in Section 2 of this guide and the Student Code (www.atu.ie/sligo-documents-student-code).

Concourse

The Concourse is the name given to the main college corridor which runs along the first floor of the college.

It begins at the top of the staircase at Reception and runs down to the Main Auditorium and O'Hehirs' Food Court.

Along the Concourse you will find:

- Admissions Office
- Access Office
- ATU Global
- Yeats Library

It is also the venue for various exhibitions and events throughout the college year.

Consent

College life gives you the opportunity to meet new people and develop new relationships. Dating can be amazing when you both click but it can also get a little confusing, especially when it comes to sex. It can be unclear what the other person is thinking or how intimate they wish to get - we are not mind-readers after all. Before you take things any further with a romantic or sexual partner, it's important to obtain their permission, which means their consent. A lack of understanding of

what is meant by consent and that consent is crucial in all sexual activity can be a contributing factor for unwanted sexual activity and assault.

What is Consent?

- Sexual consent is **OMFG** - Ongoing, Mutual and Freely Given.
- Sexual consent is the voluntary agreement between both partners with equal power to engage in sexual activity.
- This agreement can be verbal or non-verbal but should be given freely by individuals capable of consenting, that is, who are over the legal age of consent and not under the influence of alcohol or drugs.
- Consent should never be assumed - it should be a clear, ongoing and continuous process present in every new or repeated sexual encounter.
- Consent can be withdrawn at any time. Someone may say yes initially and withdraw consent later.
- You need consent for **ALL** sexual activity.

How Does Consent Work?

Many people worry that talking about consent will be awkward or a mood-killer, but this is not the case. If anything, the mood is much more positive when both of you can freely communicate what you do or do not want.

There are many ways to enhance your sexual communication. First off, you could talk about what terms like "hooking up" or "going further" mean to each of you.

You can also talk about how you like to indicate when you're in the mood, and how you'd like your partner to respond to you when you are. Consider having these conversations during a time when you're not being physically intimate.

Communications and consent can even become part of your foreplay, for example by saying things like:

- Are you comfortable?
- Is this ok?
- Does this feel good?
- Tell me what you like.

Listen and respond to their answers and always remember that consent is about more than avoiding abuse - it is about making sex safer, healthier, and more pleasurable for everyone involved.

How to know if someone is not freely consenting

- If someone is not responding enthusiastically or clearly, they may be feeling coerced. Check in with them and if they seem happy not to continue, **STOP**.
- If someone is struggling or expressing any sort of discomfort (verbally or non-verbally), notice and **STOP**.
- If the other person seems frozen or afraid, **STOP**.
- If someone is asleep or falling asleep, **STOP**.
- If someone is under the effects of drugs or alcohol and can no longer indicate their enjoyment and/or willingness, **STOP**.

- If he or she is acting in any other way that suggests they are not up for sex, check it out and be prepared to **STOP**.

Some facts to keep in mind

- The legal age of consent in Ireland is 17.
- Engaging in sexual activity of any kind without consent is extremely harmful to the person you are assaulting and is a criminal act.

More information can be found at www.drcc.ie

Intimate Images

Consent also applies to the sharing of intimate images. The **Harassment, Harmful Communications and Related Offences Act 2020**, also known as "Coco's Law", created two additional offences which criminalise the non-consensual distribution of intimate images and the taking, distribution or publication of intimate images without consent even if there is no specific intent to cause harm. Victims can report the sharing of illegal content online to hotline.ie. Hotline will help to get the images removed from the internet and social media platforms.

ATU Sligo is committed to the promotion of positive sexual experiences and there will be opportunities and campaigns during the academic year for you to learn more about Active* Consent and positive sexual health and well-being. See also **Consent** on our website.

Cycling Facilities

The campus cycling facilities are available for both staff and students who cycle to campus. These facilities comprise of the following:

Unisex Shower/Changing Facility Room H0023

This room is located on the lower ground floor of the Student Centre (Block H). The room comprises of five shower stalls, sixty heated and ventilated lockers, hair dryers, hand wash facility and mirrors.

Internal Locker Room H0023

There are sixty lockers provided to store and air clothing and personal belongings pursuant to the activity of cycling and are not intended for general use. 30 lockers are operated with €1 coins and the other 30 are operated with €2 coins. A coin must be inserted in order to secure the locker and enable the key to be removed. The coin is refunded when the key is replaced, and locker opened.

External Lockers Contained in Shelters

There are currently six external lockers located at each of the following bicycle shelter B, D, G, H, L and P. These lockers are operated as per the internal lockers in H0023.

External Bicycle Shelters

These shelters at Blocks B, D, E, G, H, L and P provide a means to lock bikes in a secure manner by locking the bicycle wheel and frame to a secure rail.

External Bicycle Lockers

There are five external bicycle lockers located at blocks D, H, L and P. These are for use by people with high value bikes to allow them to lock the bike in a separate enclosure. The lockers will be available on a first come first serve basis and can be obtained by contacting the Estates Office in room A1020. It is envisaged that the users use their own padlock.

Lockers are permitted for use for one day only. More details on cycling facility procedures are available on our website **Cycling Facilities**.

Bolt E-Bikes

Electric Bicycle Hire

There are three locations on campus where you can pick up an e-bike. These are at:

- the Manorhamilton Road entrance
- beside the SU Shop
- outside YAADA

Download the Bolt App by clicking on this link: <https://bolt.eu/en-ie/cities/sligo/>

Dining

A comprehensive catering service is offered across the campus serving breakfast, lunches and beverages throughout the day and it is the policy of the University to focus on increasing the healthy offerings at each location.

Opening hours vary for each location but generally services are available during term time from:

Monday to Thursday:
8:30am to 6:30pm

Friday:
8:30am to 2:00pm (Main Canteen)
8:30am to 4:00pm (Coffee Kiosk)

We also operate vending in certain areas across campus for convenience.

Disability

The Disability Support Service has a specific responsibility to support students attending the college who have a disability. It is however the responsibility of any student with a disability to register at the beginning of their studies and contact the Disability Service at the beginning of each academic year so that their needs can be reviewed.

ATU Sligo cannot take responsibility for failing to support a student where the student has not identified their needs to the Disability Service. Supports for students with disabilities are continuously being developed and it is important that students make themselves aware of these developments. For more information on ATU Sligo Disability Service view **Disability Support** on our website.



Disclosure

The CSO prevalence study on sexual violence found that 34% of adults with a third level education reported experiencing sexual violence since the age of 17. It also found that 50% of people aged 18-24 who experienced sexual violence in their lifetime, disclosed the experience to someone and the vast majority first disclosed the abuse to a friend.

If you don't know what to say? Start here:

Ways to support someone who discloses a negative sexual experience to you:

Listen to whatever they want to share, being heard is important - Opening up about a negative sexual experience can be stressful. Let the person know that you are listening, you believe them and will support them.

Ask them "what do you want to do next?" - They may not know what they want to do right away, but what happens next needs to be their choice. Whatever decision the person makes for themselves may be different than the decision you would make for yourself. Respect and support their decision.

Acknowledge - their feelings and reassure them that whatever they feel is natural. Say "I'm sorry this happened to you".

Refer and support - There are many support services available both on and off campus that you can refer a person to.

Self-care is important for you too - Hearing about someone's negative sexual experience can be very difficult.

Make time for your own self-care and mental wellbeing.

Visit Rape Crisis Help for a national directory of services:
www.rapecrisishelp.ie

- Find out your options for medical treatment and reporting:
www2.hse.ie/services/satu/
- Visit An Garda Síochána for further information on reporting:
garda.ie/en/crime/sexual-crime
- Visit <https://www.atu.ie/sligo-health-services-sexual-emotional-physical-abuse> for on campus sexual violence and misconduct support services
- For more Active* Consent tools and tips, visit Active* Consent at University of Galway, (consenthub.ie)

Taken from Active* Consent and developed in partnership with USI (Union of Students in Ireland) and Galway Rape Crisis Centre.

ATU Sligo in cultivating an environment where everyone is treated with dignity and respect. Speak Out is an online anonymous reporting tool for all students and staff to disclose past or ongoing incidences of bullying, cyberbullying, harassment, discrimination, hate crime, coercive behaviour, stalking, assault, sexual harassment, sexual assault & rape experienced or witnessed. The data is completely anonymised and helps ATU to understand the nature of unwanted behaviours happening within our community so that we can respond. To make a formal complaint see the Complaints section of this guide.

Dyslexia

As part of the Disability Office in ATU Sligo, the Learning Support Tutor provides support to students who have dyslexia or other specific learning difficulties. Students who have been diagnosed as having dyslexia or other specific learning difficulties should contact the Learning Support Tutor early in the academic year to complete a needs assessment and discuss their support plan. Dyslexia Screening can also be arranged for students who suspect they may have dyslexia.

For more information contact learningsupport.sligo@atu.ie

Erasmus+

Each year ATU Sligo welcomes many European students to study here through the Erasmus+ programme. The Erasmus+ Programme is a European Union (EU) student exchange programme established in 1987.

In addition to students from other EU countries attending ATU Sligo, Erasmus also provides opportunities for students from ATU Sligo to travel for a study period or work placement in a European OR non-European country (International Mobility) as part of their course of study. Over the years, ATU Sligo has developed specific links in Austria, Belgium, Czech Republic, Denmark, Finland, France, Germany, Greece, Hungary, Italy, Netherlands, Portugal, Spain, Sweden and Romania.

Erasmus+ students experience an educational system in another country while also enhancing their linguistic, cultural awareness and other transversal skills.

While on Erasmus, students are exempt from paying tuition fees at the host institution and receive financial support from the European Commission to help cover their expenses (as there are a limited number of grants, places are limited and there is a selection procedure). Upon completion of their study programme, students receive full recognition of their Erasmus study programme utilising the European Credit Transfer System (ECTS).

Erasmus+ offers a wonderful opportunity which will benefit you both personally and academically with many new friends waiting to meet you.

For more information contact our International Office by email erasmus.sligo@atu.ie

Equality, Diversity and Inclusion (EDI)

ATU is committed to promoting equality in all aspects of the University's activities and to creating an environment and culture where all students and staff are treated with dignity and respect regardless of age, gender, disability, sexual orientation, race, ethnic origin, membership of the Traveller Community, religious beliefs, civil partnership status or family status.

In essence everyone in the ATU community has the right to be treated with dignity and respect, and has the obligation to treat other with dignity and respect.

The full EDI Policy is available on the Student Hub (EDI Policies (sharepoint.com)) and any queries can be directed to the EDI Office by emailing edi@atu.ie

Examinations

Exams and assessments are a necessary part of college life. The types of assessments used will vary by course and even by module, but each module will have assessment built in to evaluate your learning within that semester. While continuous assessment occurs throughout modules, many modules also have a final exam at the end of the semester after teaching ends. These exams are scheduled in the Academic Calendar for January and May 2025.

Following the issuing of Exam Results, there are one or two feedback days to allow students to discuss results with their lecturer - these are an important opportunity for students to receive feedback to help them prepare for the next semester or possibly repeat assessment. Please avail of this opportunity. Further information on exams is provided in Section 2 of this Guide and at **Examinations** on the Student-Portal of the website.

First Year Experience

At ATU Sligo, we have a welcoming and supportive environment for our first-year students and have created the Connect for Success: Your First Five Weeks programme to help new students to settle in and learn all about what ATU Sligo and the greater Sligo area has to offer. Full participation in this programme will answer many questions that you have when starting college.



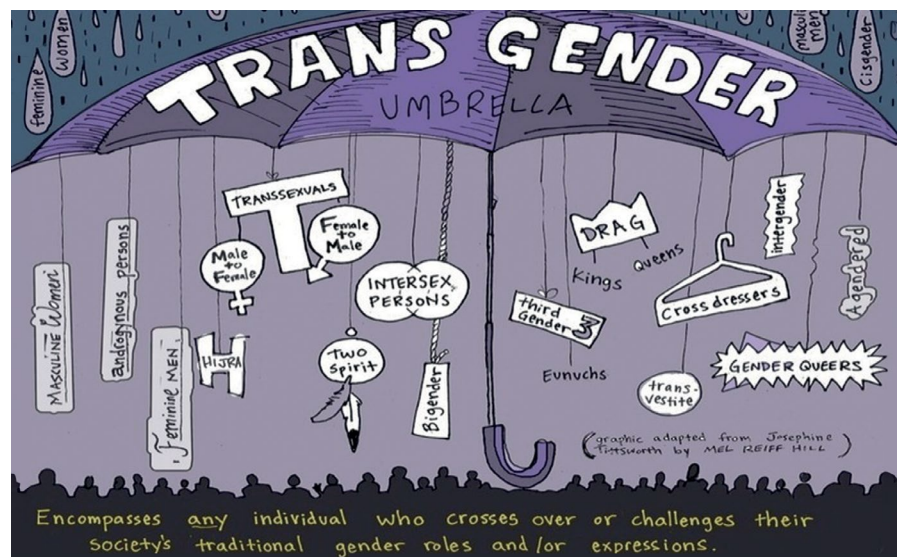
Gender Identity and Expression

As part of our broader commitment to the principles of equality, diversity, and inclusion (EDI), and ensuring that we can all work and learn in an environment where diversity is celebrated and everyone is treated fairly, ATU is committed to supporting students and staff in defining their gender identity and expression.

The University recognises the range, types, and nature of gender diversity and is committed to supporting students and staff with diverse genders and increasing understanding of gender diversity within the ATU community. If you want to better understand the University commitment to supporting you in your gender identity and expression, please read our Gender Identity and Expression Policy on the Student Hub (EDI Policies (sharepoint.com)).

The purpose of this policy is to support ATU students and staff in expressing their gender identity and expression without fear of adverse consequences, and to work to ensure that the University environment, including the physical environment, is positive, safe, and non-discriminatory. The policy affirms people's right to their own unique identity, authentic expression, and self-determination, and recognises the diverse range of gender identities.

The accompanying procedure explains the different pathways for staff and students seeking information, supports and/or changes to their records with respect to gender identity and expression within the University. If you have any questions about how to be supported in expressing your gender identity in ATU, please contact the Equality, Diversity and Inclusion Office by emailing edi@atu.ie



Green Campus

ATU Sligo have been actively transforming our campus activities to reduce our impact on the environment. We are a designated 'Green Campus' by An Taisce and awarded the Green Flag for our efforts on waste and energy management. As we continue to reduce our impact around energy and waste, we have also committed to improve our practices on transport and biodiversity. This is highlighted in our Sustainability Strategy, available at **Green Campus**, which sets out a roadmap to achieve these commitments across four key areas: 1) Governance, 2) Operations, 3) Teaching, Learning & Research and 4) Our Community. We have lots of work to do any many exciting plans for the year ahead!

Sustainability on campus

Energy

Our aim is for ATU Sligo to become a carbon neutral campus, but we all have a part to play. By acting together to change small daily habits we can make a big difference. Remember to turn down thermostats if a room is too hot and switch off lights and equipment when not in use.

Litter & Waste

To be a more sustainable campus we need to reduce the amount of waste we generate and send to landfill. Here are some simple tips so you can play your part:

- Avoid waste where possible. Select products with the least amount of packaging, and packaging that can be recycled.

- Know what can be recycled: Rigid plastic, paper and cardboard, cans and tins can be placed in the recycling bins, if they are dry and clean.
- Know what cannot be recycled: Disposable coffee cups are not recyclable and must be placed in the general waste or compost bin (if compostable). Wet or food contaminated packaging, light plastic film or soft plastic wrapping are not recyclable.
- Please respect our campus by not littering. General waste and recycling bins are available throughout the campus and compost bins can be found in the canteen areas.
- Remember waste cannot be brought to campus from home. Our bins are monitored and regularly audited against our Green Campus reduction targets.

Check our Sustainability Guide for lots of easy to follow tips on how to reduce our environmental footprint.

Health Service

ATU Sligo is concerned for the health and wellbeing of its student population and works to promote and maintain good emotional and physical health amongst its students by offering free Medical and Counselling Services.

The Student Counselling Service is a confidential student support which can be contacted at counselling.sligo@atu.ie and has further information and a range of resources available at <https://atu.ie/sligo-student-supports>

The Student Health Service is a student-friendly service with attention given to preventative medicine, health promotion and healthy lifestyles. It is intended to provide acute medical care during the week when it is not possible to attend your regular GP. The medical service can be contacted at studenthealthservices.sligo@atu.ie and further information is available at <https://www.atu.ie/sligo-health-services>

The Student Health Services are all located in the Student Centre and further information on each service is available in the Directory of Supports and Services in the final section of this guide.

Healthy Campus

The Healthy Campus Initiative aspires to create within ATU Sligo an environment and culture that enhances the health, well-being and sustainability of all members of its community and enables them to achieve their full potential.

Through this a balanced lifestyle will be valued, and good physical and emotional health will be promoted while everyone will be encouraged and supported to take responsibility for their health and wellbeing. For more information on Healthy Campus contact healthycampus.sligo@atu.ie. Check out our Healthy Campus Activities on Instagram and Twitter by following [@atuhealthysligo](https://twitter.com/atuhealthysligo)

Independence

College offers many young people the opportunity to experience independence from family and home for the first time and this is something that is looked forward to and cherished. ATU Sligo respects you as the adult that you are - responsible members of the community and the entrepreneur or social leader of the future. If you are over 18, we will not discuss your business with anyone without your expressed permission.

With independence comes responsibility and regardless of what age you are, you are expected to behave in a mature, reasonable, and honest manner, meet the requirements of your course of study and have due regard to the rights of others.

Induction - Your First Five Weeks

Participation in the full student induction programme is your first step to success at ATU Sligo. The #First5weeks welcome programme is designed to help you settle in, make connections, create an awareness of the academic expectations we have, as well as provide information on the supports and services available to help you get to grips with the transition to third level education.

IT Services Help Desk

When you need some extra help with accessing the ATU Sligo computer system, the IT Services Helpdesk is there to help you. Please visit IT Services Technical Support page at IT Services where most of your questions should be answered. You can also chat with technical support there. If you are still having issues visit our helpdesk www.atu.ie/sligo-helpdesk or in person at E1011.

Laptop and Phone Charging Lockers

There are Laptop and Phone Charging lockers available at the Main Auditorium where your device may be charged securely. These lockers are intended solely for this purpose and are not intended for storage of any other items.

To report a fault or to recover your belongings contact the Estates Office, Room A1020 or Phone 071 930 5109.

LinkedIn Learning

ATU has partnered with LinkedIn Learning to provide you with free access to 16,000+ courses over a range of subjects to support your learning.

You can access on-demand learning on any device at any time 24/7. Stop when you need to and pick up where you have left off. LinkedIn Learning will keep a record of your learning and you can add it to your own LinkedIn profile.

There are courses there that can help you with study and personal effectiveness skills, academic skills like research methods, note-taking or writing, lots of topics in IT, business and creativity, as well as subject-specific materials in hundreds of fields.

When it comes to thinking about work placements or your future career, there are extensive resources on CV development, interview skills, the changing job market and key trends.

Many of your lecturers will include LinkedIn Learning courses to complement their own expertise. They may even create dedicated learning pathways to link a variety of resources together.

As soon as you can access Moodle, you can make use of LinkedIn Learning. Just go to the Student Support site on Moodle and click on the link - your ATU Sligo student ID and password will be enough to give you access to a whole world of learning!

Lost Property

The Students' Union provides a Lost Property service. Check for lost items at the SU Office; with the caretaking and cleaning staff; University Reception Desk or Faculty Management Offices.

Mental Health

ATU Sligo is committed to promoting your mental health and you will have the opportunity to participate in different wellness initiatives during the year and in addition there are online resources available to help students who may be struggling.

Being Well, Living Well toolkit

This online toolkit aims to help students develop the confidence to manage wellbeing issues. It covers four main themes: Living Well, Feeling Well, Staying Safe and Spending Well. The programme can be accessed on Moodle through the ATU Sligo website at the following link <https://www.atu.ie/sligo-being-well-living-well-toolkit>

Money Matters

It is a fact of life that most students suffer from a lack of money! The Student Cost of Living Guide 2024 estimated the monthly cost for a student renting in Sligo as €1,191. This includes accommodation, utilities, groceries, transport, entertainment and use of gym.

The following points may help you in managing your money:

- Budget carefully. The MABS Budgeting Tool will allow you to set out your income and expenditure and make a budget. It takes roughly 15 to 20 minutes to work through the tool, find it at mabs.ie.
- Remember that you will have most outgoings at the start of the year. You will have to budget for books, class materials, rent deposits etc.
- If approved for SUSI for the first time, there may be delays in receiving the first instalment.
- Talk to the Student Officer in your bank before you get into any difficulties. They are there to help you.
- If you feel that you may have to drop out of the University because you have serious money problems, owing to a change in your circumstances since coming to the University, the Student Assistance Fund may be able to help you. For more information see the Access Office in the Directory of Supports and Services in the final section of this guide, contact the Assistant Access Officer or VP for Wellbeing & Engagement of the Students' Union.

- If you are short of money, try not to run up credit card bills that you will be unable to repay. Credit cards are amongst the most expensive form of credit available (many have interest rates in excess of 15%). If you must use one, use it for making purchases when you can avail of a period of interest free credit before your next bill arrives. Using credit cards to withdraw money, incurs a withdrawal charge as well as having to pay interest from an earlier date. Try to pay your bill in full each month.
- If your course of study includes mandatory field trips and you are in receipt of a maintenance grant, the cost of the field trip (accommodation and transport) can be recouped. You will be required to submit a letter from the organiser of the field trip detailing costs to SUSI as appropriate.
- For advice and information, check out **studentfinance.ie** This is an independent Irish website designed to provide comprehensive information on the range of financial supports available to higher education students.

Moodle

Moodle (Modular Object-Oriented Dynamic Learning Environment) is the learning management system you will use to access much of your learning resources and submit your assessments. Every student has an account personalised to their course of study and active use of your account is important in preparing you for success at ATU Sligo. The personalised content to reflect your course of study become visible 24 hours following the completion of registration with ATU Sligo.

Mothers' Room

The Mothers' Room is for use by expectant mothers (staff and students) who may need a quiet space to rest during pregnancy. It is also available to mothers who need to express if they are currently breastfeeding when they return to college. If you would like to access the room which is located upstairs in the Student Centre, please drop an email in confidence to **healthycampus.sligo@atu.ie**, for a one-time access code to the room.

ATU Sligo is a breast-feeding friendly campus and is a member of the 'We're Breastfeeding Sligo' initiative.

Notices and Posters

There are many noticeboards located throughout the campus which are overseen by the Students' Union.

International Students

Dedicated noticeboard with information for our International Students can be found on the ground floor to the right of the main Reception Desk.

Student Support Services

Information on ATU Sligo Student Support Services can be found on the noticeboards located on the Main Concourse and also in the Student Centre.

Careers Information Notices

Located on the Main Concourse and available online via the ATU Sligo online Careers Services platform: <https://atu.jobteaser.com>

The Examinations Noticeboard

Located outside the Library on the Main Concourse. In relation to exam timetables, please make sure you refer to the examination's website on the Student Portal <https://www.atu.ie/sligo-examination-timetables> as they are subject to change.

Disability Service

Dedicated noticeboard with information relating to our Disability Service can be located opposite the Library next to door A1013.

University Regulations - Student Code

Relevant policies and procedures are available online at <https://www.atu.ie/sligo-documents-student-code>

Unauthorised posters and notices or those affixed to walls or doors will be removed.

Personal Accident Insurance

All full-time registered students of ATU Sligo are covered for personal accident insurance for the academic year. This is a 24/7 cover, regardless of where the accident occurs. The cover in any one year includes medical expenses in excess of €100 incurred as a result of accidental injury. Please note there are certain exclusions to the policy.

All students involved in sports should wear the appropriate protective clothing and equipment relevant to the given sport or activity. This should include protective helmets in the case of cycling, hurling and other appropriate sports. Gum shields should be worn in the case of hurling etc., and the various codes of football.

Students involved in accidents are required to complete the Accident Report Form within 24 hours following the accident and return the form to the Health and Safety Office. Accident Report Forms are available at <https://atlantictu.sharepoint.com/sites/Sligo-HealthSafety/SitePages/Accident-Incident-Training.aspx> or from your relevant Team Coach.

Students travelling abroad must obtain separate travel insurance cover for every trip they take. There is limited cover for Erasmus and Apprentice Students whilst they are engaged in University activities or representing the University.

Personal Post

Any post sent to the University on your behalf will be sent to the Students' Union Office for distribution. You should contact the Students' Union if you are expecting a letter.

Please note the Students' Union will not accept any packages on behalf of students and that any post uncollected within one month will be returned to sender by the Students' Union.

Personal Problems

If you are experiencing personal problems, please contact one of your lecturers, The Student Counselling Service, Student Health Service, Access Officer, Pastoral Care & Chaplaincy Service, Student Support Services Officer those listed under the Examinations section or the Students' Union. Please see the Directory of Supports and Services at the end of this guide to see which will provide the most appropriate support for you.

Remember, you are not alone however bad your problems may seem, we are here to help and there is always someone you can talk to.



Places of Worship in Sligo

Church	Tel	Day	Times
Catholic Churches			
St Joseph's Ballytivnan Road F91 VH73	071 9142422	Saturday Sunday	19:30 11:00, 12.30
St Mary's Cathedral Temple St F91 CF59	071 9162670	Saturday Sunday	19:30 08:30, 10:30, 12:00, 19:00
St Anne's Cranmore Road F91 R250	071 9145028	Saturday Sunday	18:30 10:00; 13:00; 18:30
Dominican Community HolyCrossFriary High Street F91 K123	071 9142700	Saturday Sunday	19:30 09:30; 11:00; 12:15
Church of Ireland			
St John's Cathedral John Street F91 E303	071 9157993	Sunday	10:30
Calry Church The Mall F91 W992	071 9146513	Sunday	11:00
Islamic Prayer Service			
Sligo University Hospital The Mall F91 H684	087 6819987	Friday	Fajr, Zuhr, Asr, Maghreb, Isha Friday Prayer
Riverside Abbeyquarter North F91 DC4H	086 3653901		Fajr, Zuhr, Asr, Maghreb, Isha Friday Prayer
Sligo Islamic Centre 42 Mail Coach Road F91 TK8K	089 4437707		Friday Prayer

Church	Tel	Day	Times
Presbyterian Church			
Presbyterian Church Church Street F91 EY8K	071 9162337 086 0752137	Sunday	11:30
Sligo Methodist Church			
Sligo Methodist Church Wine Street F91 HY48	087 7088808	Sunday	10:15
Sligo City Church (Pentecostal)			
Sligo City Church Mercy College Sligo Chapel Hill, Sligo F91 CF80	086 8492552	Sunday	11:00
Seventh Day Adventist Church			
Seventh Day Adventist Church Church Street F91 H3AF	087 1120238	Saturday	11:00
Redeemed Christian Church of God			
Function Hall Presbyterian Church Church Street F91 EY8K	087 6839778	Wednesday Sunday	19:00 14:00
Baptist Church			
Sligo Baptist Church Cartron Village, Sligo F91 XE42	087 7785979	Sunday	10:30
The Redeemed Evangelical Mission (TREM) Church			
TREM Church Unit 9, Cartron Village, F91 TW64	086 2552343	Tuesday Sunday	18:00 11:00



Public Transport

ATU Sligo's campus is served by a variety of bus companies that provide a daily service for those who live convenient to Sligo and a weekly service for those who travel home at weekends. The Sligo City Bus Service has an official stop on campus near the Main Canteen and a weekly ticket is available. Local Link services from a wider radius in County Sligo and surrounding counties also use this stop.

Many students who are not from Sligo, live here during the week and commute home at weekends. Special transport arrangements, both public and private, facilitate this to a variety of destinations including Mayo, Donegal, Leitrim, Roscommon, Cavan and Galway. There are also excellent private and public bus and rail links to Dublin via Longford and Mullingar.

Bus and train timetables are posted on the Students' Union noticeboard on the ground floor in the Student Centre. Timetables are also available at: locallink.ie, irishrail.ie and buseireann.ie

Student & Young Adult Leap Cards

Holders of Student & Young Adult Leap cards are entitled to reduce price travel on Bus Éireann, Local Link, Expressway services and Irish Rail. You can apply for this card at leapcard.ie

Semester

The academic year is divided into two equal parts with 13 teaching weeks each, called semesters. The modules are delivered and examined within each semester. New or follow-on modules are delivered in the next semester. For the 24/25 Academic Year, semesters in ATU Sligo will run as follows:

Semester 1 start September 16th 2024.

Semester 2 start January 20th 2025.

More information can be found at ATU Sligo Academic Calendar at <https://www.atu.ie/sligo-academic-calendar>

Sexual Violence and Sexual Harassment

ATU Sligo promotes an environment where everyone is treated with dignity and respect, however students may experience sexual violence and sexual harassment in their lives, on, or off campus.

Sexual harassment refers to any form of unwanted verbal, non-verbal or physical conduct of a sexual nature which has the purpose, or effect, of violating a person's dignity and creating an intimidating, hostile, degrading, humiliating or offensive environment for the person. It can take different forms which are often based on gender or sexual orientation and is a form of sexual violence. It includes:

- sexist hostility - being treated differently because of your sex
- sexual hostility - repeatedly being told sexual stories or jokes
- harassments via electronic communications
- unwanted efforts to establish a sexual relationship despite efforts to discourage it

Sexual violence occurs when there is non-consent and means any sexual act or attempt to obtain a sexual act by violence or coercion. Verbal pressure, intoxication or use of force are tactics used in perpetrating sexual violence.

Should you experience sexual harassment or violence, regardless of where it occurs, or by whom, we are there to support and help you. Your first point of contact in relation to a recent incident will probably be our Student Health Services

www.atu.ie/sligo-health-services

Our Student Counselling Service <https://www.itsligo.ie/student-hub/student-support-services/counselling/> is there to support you in relation to any incident regardless of whether it is recent, or one that may date back many years. Contacts for both services are provided in the Directory of Supports and Services in the third section of this guide. Please also see the resources in this regard that are shared on our website <https://atu.ie/sligo-consent>

Harassment or violence of any type, but specifically that of a sexual nature runs counter to the rights and values enshrined in ATU Student Code <https://atu.ie/sligo-student-charter> and specifically “the right to study in an atmosphere free of harassment and intimidation and that promotes personal integrity and dignity. This is not accepted behaviour amongst the ATU Sligo community.

For further information on issues of gender-based violence contact the RESPECT team: respect@atu.ie

ATU Sligo recognises that for a variety of reasons you may not feel able to come forward about your experience of bullying, harassment, or sexual harassment. It is for this reason that ATU Sligo provides the “Speak Out” reporting tool.



Speak Out

In accordance with the Student Code, ATU Sligo promotes an environment where everyone is treated with dignity and respect. “Speak Out” is an online space to speak out against misconduct that students or staff have experienced or witnessed. The anonymous reporting tool provides an opportunity for students/ staff to anonymously report incidents (ongoing or past incidences) of bullying, harassment, discrimination, hate crimes, assault, sexual harassment, sexual assault, and rape that the student/staff have experienced or witnessed.

Using “Speak Out” allows you to report an incident without having to give your name or disclose personal details. A series of questions direct respondents to the relevant support services available both within and outside the college. Through “Speak Out”, ATU Sligo can receive information about incidents that are occurring within its community that otherwise might not be brought to its attention. The information provided is a valuable source of feedback to ensure that ATU Sligo is providing an environment where everyone is treated with dignity and respect and receives the support that is required. To anonymously report an incident please visit <https://atusligo.speakout.ie>





Sport and Recreation Facilities

ATU Sligo has state-of-the-art sporting and recreational amenities available for your use. With access available seven days a week, keeping active has never been so easy.

Gym

This facility available to students all year round. The equipment includes a full range of high quality aerobic and resistance equipment (dual machines), including free weights (1kg - 30kg). The Knocknarea Arena qualified fitness team can provide individual training programmes.

Opening hours:

- Monday-Thursday: 8am-10pm
- Fridays: 8am-9pm
- Saturday and Sundays: 9am-4pm

The Gym fees for students are:

- Full Academic Year: €140
- Term: €80
- One Session: €6

Knocknarea Arena

At the centre of our facilities is an impressive multi-purpose sports hall which can be easily divided into two independent sections which can be used for a wide variety of sports including basketball, badminton, 5-a-side, volleyball, etc.

Multi-Activity Studio

This versatile facility provides for a variety of uses including spinning, aerobic/yoga classes, martial arts and small group functions to name a few.

Fitness Classes

Call into reception or check our social media platforms for more information on fitness classes.

Athletics Track

ATU Sligo has an all-weather international standard, 400M eight-lane tartan surface, floodlit, running track with throwing and jumping facilities. This is a state-of-the-art facility offering excellent training and competition conditions.

Playing Fields

There is also a 3G Astro turf pitch which is fully floodlit, and FIFA approved. The Astro turf can be split into 3 smaller pitches. There are also 4 floodlit grass pitches - a championship standard pitch for GAA, a high-quality Soccer pitch, a recreational Rugby pitch and a high-quality training pitch.

All facility bookings (except the gym) can be made through <https://portal.sportskey.com/venues/it-sligo>

Amenities Available

The Knocknarea Arena has additional amenities such as free parking, bike racks, Wi-Fi and changing rooms.

 **ATU Sligo Knocknarea Arena**

 **KnocknareaArena**

 **KnocknareaArena**

The Knocknarea Arena management and staff look forward to meeting you and making your visit an enjoyable experience. For more information, phone 071 915 5211, email knocknareaarena@atu.ie or log onto www.atu.ie/sligo-campus

Sports Scholarships

ATU Sligo offers a Sports Scholarship Scheme aimed to assist talented student athletes reach their sporting potential. The Sports Scholarship Programme is designed to nurture talented sports people who are prepared to make the commitment to the ATU Sligo sports clubs in their chosen discipline. If you are a keen sportsperson competing at an elite level, we want to hear from you.

Under the scheme, up to 20 new scholarships and bursaries are awarded each year. The Gold Scholarship Award is €3,000. If successful, you will also have to balance your participation in your chosen sport and representing ATU Sligo with your studies.



Student Centre

The Student Centre is the building removed from others to your right as you go towards “The Fish”, the main entrance and reception area. The Student Centre is home to ATUSSU - ATU Sligo Students’ Union and many of the Student Support Services, including the Access Office Health and Counselling Services, Pastoral Care & Chaplaincy Services and The Sanctuary detailed in this guide. In addition, the Students’ Union Shop and a social area are all located on the ground floor. Hume Hall is located on the first floor and the Payment Kiosk for the Visitors Carpark is located on entry to the building. All of which make this building a hub of activity and student life during the academic year.

Student Identity (ID) Card

Once you are fully registered as an ATU Sligo student, you are eligible for a Student ID card.

ID cards are generated from the information and photograph provided on registration and processed off campus on behalf of ATU Sligo. Cards are sent to the address ATU Sligo has on file for you from when you registered. If you wish to have the card posted to a different address, you will need to contact the Admissions Office to change it. Cards will be posted to new students from October onwards

The student ID card is intended to facilitate your studies at ATU Sligo.

If you lose your student ID card, please complete the Replacement Student Card Form at <https://www.itsligo.ie/admissions-2/student-cards/>.

- You are always required to have your student ID card on campus.
- You must produce your student ID card to any member of staff if requested to do so (this includes academic, administrative, library, technical and other support staff, caretakers, cleaners).
- You must produce your student ID card to use the Student Health and Counselling Service.
- Your student ID card must be on your desk during ALL examinations.
- Your student card is required for borrowing books from the ATU Library Service.
- Your student card is required for using the printing service on the Sligo campus.

Student Progression

Following positive exam and assessment performance, most students progress seamlessly from one semester or year of their studies to the next. For some students, this progression may not be so straight forward and there are times that an individual progression path will be developed. This may include:

- attending their full-time course on a part-time basis for two or more years to overcome a specific difficulty encountered. Permission for this must be received from the relevant Head of Department and this will involve both fee implications and possible loss of SUSI grant entitlement.

- carrying one or more modules from a previous academic year to a maximum value of 10 credits which will be assessed later. Approval to progress carrying failed modules is at the discretion of the exam board and is not automatic. This student may or may not have to attend classes in the relevant modules. While a student may be allowed to progress without passing all modules of one year, they will not be allowed to graduate until these credits have been achieved.
- repeat attending specific modules, in this instance a Head of Department will give permission for a student to re-attend and be examined in specific module(s) and will become a part-time student for that year before hopefully resuming full-time studies the following year. This option will incur fees and possible loss of SUSI grant entitlement.

Level 6 and Level 7 programmes have add-on study options allowing students to progress to graduate with Level 8 Honours Degree accreditation. Students will have an opportunity to apply for the relevant Add On programme in their final year of their Level 6 or Level 7 Programme.

Student Portal

The Student Portal is where you have found this Student Guide. Just about everything that you need to know about being a student at ATU Sligo can be found here

The Student Portal should be your first port of call if you are looking for comprehensive information on services and supports available to you as an ATU student. It also features:

- Up-to-the minute information on what's happening at ATU.
- Any updates or changes to services.
- A FAQ section that provides quick answers to many queries that students have.

Most information is just one or two clicks away and you can access the Student Portal from your phone, tablet, laptop or any other web connect device.

Take some time to check out the Student Portal.

My Student Portal



MY EMAIL



MY TIMETABLE

Students' Union

ATU Sligo Students' Union, or ATUSSU, is the recognised representative organisation for the student body in ATU Sligo. When you register as a student, you automatically become a member of ATUSSU. ATUSSU is also a member of the Union of Students in Ireland (USI), the national Students' Union of Ireland. The Students' Union exists to represent you, the student, on a range of issues throughout your college experience and sits on various committees relating to student welfare, education and recreation.

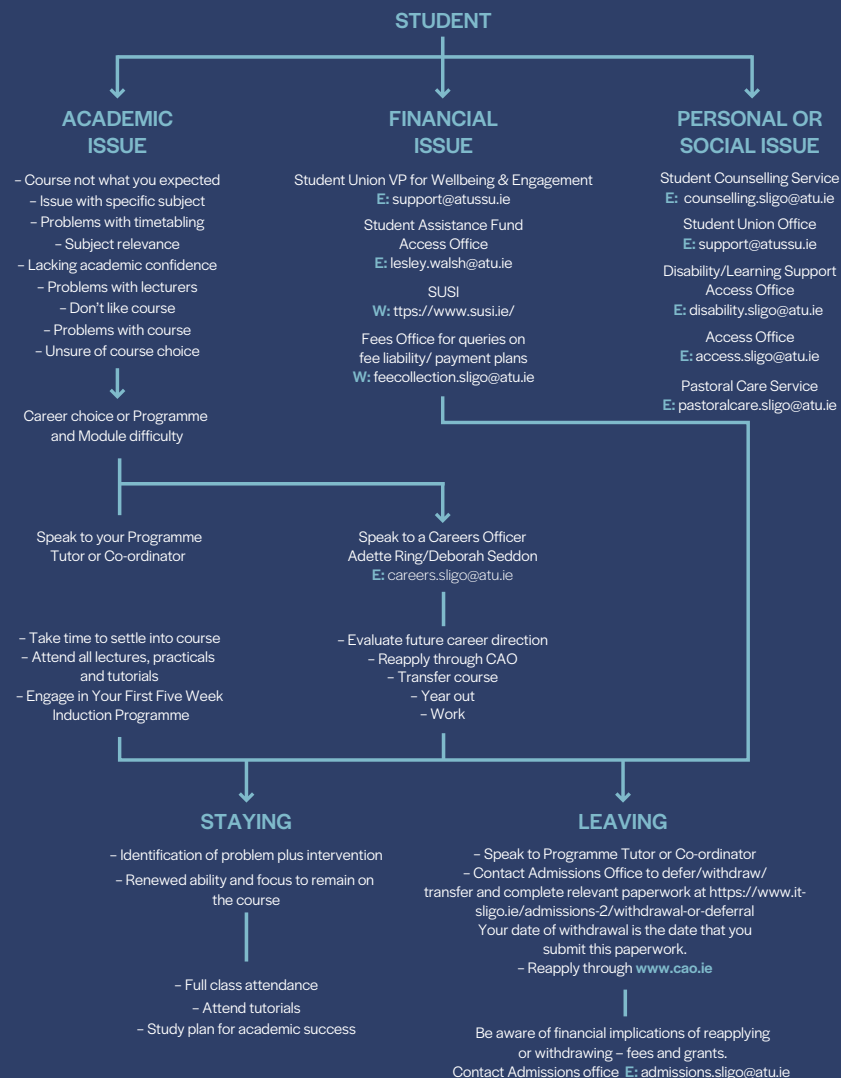
Your Students' Union is located on the bottom floor of the Student Centre and is a lively social spot for students to visit and receive valuable information about student rights, health, different clubs and societies and, most importantly, confidential advice. The Students' Union provides you with the most up-to-date information of what is happening around the college. As well as giving sound advice, it runs several services for students including a shop and organising various events and campaigns for students.

At the beginning of the academic year, in-class elections will take place to elect representatives from each class to sit on the Student Representative Council.

Training is provided to those selected for the post. Representatives will be required to be the eyes and ears of the Union in the classroom and will be required to attend six meetings throughout the course of the year. In March of the academic term, elections are held for full-time sabbatical and part-time posts within the Union.

The candidates elected into the Union will represent you for the forthcoming academic year.

Thinking of Leaving Your Course Early? KNOW YOUR OPTIONS



It is essential to formally withdraw from or defer your course of study in advance of the deadline dates. Failure to do so may cost you money:

- It may affect any refund of fees you have paid.
- It may also result in you being liable for tuition fees if you return to study at a future date.

Turnitin

Students are expected to present work for assessment that they have prepared and developed. Turnitin helps lecturers to check students' work for potential plagiarism or improper citation. It takes a piece of work submitted by a student and compares it to an enormous database of work. This generates a report which shows the percentage of text from the work submitted that may match an outside source. Students are recommended to use Turnitin Draft Coach when preparing their assignment. Tutorials on use of Turnitin and Turnitin Draft Coach as well as a Digital Badge in Academic Integrity for Students are all available for students to access in their Moodle account.

Useful Websites

Bus Éireann - Bus Information	www.buseireann.ie
Crime Victims Helpline	www.crimevictimshelpline.ie
Atlantic Technological University, Sligo	www.atu.ie/sligo-campus
ATU Sligo Student Support Service	www.atu.ie/sligo-student-support-services
ATU Sligo Yeats Library	www.atu.ie/library
SUSI (Student Universal Support Ireland)	www.susi.ie
Financial Support for Higher Education	www.studentfinance.ie
Local Link Rural Bus Service	www.locallink.ie
Sexualwellbeing.ie	www.sexualwellbeing.ie
ATU Sligo Students' Union	www.atussu.ie
Irish Council for International Students	www.icosirl.ie
Irish Rail Train Information	www.irishrail.ie
North West Tourism	www.discoverireland.ie/northwest
Private Residential Tenancies Board	www.prtb.ie
Public Services Information	www.citizensinformation.ie
Sligo Sport and Recreation Partnership	www.sligosportandrecreation.ie
Sligo Tourism	www.sligococo.ie/visitsligo
Threshold (your rights and obligations as a tenant)	www.threshold.ie
Tough Times (Health and Lifestyle)	www.spunout.ie
Unexpected Pregnancy	www.positiveoptions.ie
Union of Students in Ireland	www.usi.ie

TEXT Crisis Textline Ireland: For free 24/7 support in a crisis text ATU to 50808



Values and Rights at ATU Sligo

ATU Sligo's approach to the provision of high-quality education is grounded in the following values:

- **EXCELLENCE:** Progressiveness, Independence, Courage, Quality
- **INCLUSION:** Diversity, Equality, Openness, Partnership
- **RESPECT:** Honesty, Integrity

A student at ATU Sligo has the following rights:

1. The right to expect from ATU Sligo, tuition of a professional standard on the programme of study for which they are registered and adequate educational and support facilities consistent with the resources available to ATU Sligo.
2. The right to study in an atmosphere free of harassment and intimidation, and that promotes personal integrity and dignity.
3. The right to fair and just procedures, including the right of appeal and, where considered necessary, recourse to the Office of the Ombudsman.
4. The right to be treated as a responsible member of a third-level institution, to be able to represent personal views in a reasonable manner and to be treated with normal standards of courtesy by all other members of ATU Sligo.

5. The right to be recognised by ATU Sligo authorities in a partnership approach to the administration of ATU Sligo through open and constructive consultation with students and their representatives.
6. The right to be represented on appropriate University Fora including the Governing Body, Academic Council, appropriate Sub-Committees of Academic Council and Programme Boards.

Protection, freedom of information, and the right to be treated equally without fear of discrimination in accordance with the provisions of the Equal Status Acts 2000-2011.

Section 02

The Important Stuff



University Rules and Regulations

ATU Sligo is committed to providing students with the best possible experience in higher education. All students are required to familiarise themselves with the policies, regulations and disciplinary procedures of the University which students agree to be bound by at registration.

The University Rules and Regulations agreed to at registration are:

- Student Code
- Student Network, Computing and Software Usage Regulations
- Examination Regulations
- Social Media Policy
- Academic Integrity Policy
- Fitness to Practice Policy
- ATU Library Services Regulations

Student Code

The Student Code www.atu.ie/sligo-documents-student-code sets out the rights and obligations of students. Through a partnership of management, staff and students, ATU Sligo works to ensure that its activities are conducted in a fair and equitable manner, which in turn is conducive to good working relations and an efficient and effective academic environment. The Student Code has been prepared and is implemented in that spirit. It sets out the The Principles of Fair Treatment, Honesty and Transparency and of Personal Responsibility on which the Student Code is based.

The responsibilities of students include that each student is expected to:

1. To treat members of university staff, other students, visitors to ATU and members of the local communities with equality, dignity, respect, and courtesy. This includes interactions across all social media platforms;
2. Be informed about and comply with ATU Sligo's regulations and procedures relating to students, including the Student Code;
3. To fully participate in all aspects of the learning process, including, but not limited to lecture, practicals, tutorials, field trips, practice/work placement, meetings with research supervisors, conferences, seminars.
4. Respect ATU Sligo property;
5. Pay all fees required by ATU Sligo as they become due;
6. Take all reasonable steps to ensure the Health & Safety of themselves, other students and staff of the University.

Please view www.atu.ie/sligo-documents-student-code for the latest edition of the Student Code.

Student Registration

Student registration opens in August. When registration opens, the ATU Sligo admissions team will send students an email with the relevant information needed to register as an ATU Sligo student.

Please visit New Student Registration for further information on how to register. If you need any help or assistance with your registration, you can contact admissions.sligo@atu.ie or call 071 931 8511.

Child Protection

Although the population of ATU Sligo is predominantly of adults (aged over 18 years), the safety and well-being of children (aged under 18 years) and other vulnerable people is of paramount importance.

To this end, ATU has developed a Child Protection Policy which can be accessed via the Student Portal at <https://www.itsligo.ie/wp-content/uploads/2023/09/ATU-Child-Protection-Policy-2023.pdf> The principle of this policy is that the safety and well-being of children, young people and other vulnerable people must take priority over any other consideration.

Child welfare concerns can be categorised into four different types as follows:

Neglect which can be defined in terms of an omission of care, where a child's health, development or welfare is impaired by being deprived of food, clothing, warmth, hygiene, medical care, intellectual stimulation or supervision and safety.

Emotional Abuse is normally to be found in the relationship between an adult and a child rather than in a specific event or pattern of events. It occurs when a child's or young person's developmental need for attention, affection, approval, consistency and security are not met due to incapacity or indifference from their parent or caregiver.

Physical Abuse is when someone deliberately hurts a child physically or puts them at risk of being physically hurt.

Sexual Abuse occurs when a child is used by another person for his or her gratification or sexual arousal, or for that of others. It includes the child being involved in sexual acts (masturbation, fondling, oral or penetrative sex) or exposing the child to sexual activity directly or through pornography. The age of consent in Ireland is 17 years old and this is the minimum age at which an individual is considered legally old enough to consent to participation in sexual activity.

The Designated Liaison Person for ATU is Maura Finnegan,(071 9305309) and the Deputy Designated Liaison Person for ATU Sligo is Gerry Hegarty (071 9305126). Any concerns relating to child welfare should be brought to their without delay.

Complaints

Student complaints in ATU Sligo fall into two categories, a) complaints about a service provided by the college and b) complaints about the behaviour of a student(s). These are two separate procedures available as appropriate to any student who has a genuine complaint.

Complaint about a service

ATU Sligo is committed to providing a learning environment based on equality of opportunity and respect for the dignity of its students and staff.

To ensure this, it is important that students should be able to express dissatisfaction about any aspect of the services provided or about the actions or lack of action by our staff.

With this in mind, a comprehensive procedure for students to make a complaint about services provided by ATU Sligo has been developed. Please view www.atu.ie/sligo-documents-services-complaint-procedure

If a student with a complaint (the complainant) is unsure at any stage of the procedure about who to consult, advice can be sought from any of the following:

- The Student Support Services Officer, studentsupport.sligo@atu.ie
- The Students Union, support@atussu.ie
- A Head of Department or a Head of School
- A Programme Chair
- Online Student Advisor (for online students)

The student bringing a complaint under this procedure has the right, in the procedure to seek assistance or to be accompanied during any stage of the process by a member of the ATU Sligo Students Union, a fellow student or by a member of ATU Sligo staff. Other representation will not normally be allowed.

Following this procedure, if the student feels that they have been unfairly treated or are not satisfied with the decision on the complaint, it is available to them to contact the Office of the Ombudsman. By law the Ombudsman can investigate complaints about any of ATU Sligo's administrative actions or procedures as well as delays or inaction in dealings. The Ombudsman provides an impartial, independent and free dispute resolution service.

Contact details for the Office of the Ombudsman:

Clicking on the 'Make A Complaint' link at ombudsman.ie

Address: **Office of the Ombudsman, 6 Earlsfort Terrace, Dublin 2, D02W773**
Telephone: **01 639 5600**

Complaints about student behaviour

In the same way, complaints can also be made about the behaviour of any student by another student, staff member or member of the public concerning breaches of the ATU Student Code. All complaints about a student(s) made about student behaviour will be dealt with seriously and fairly in a professional manner.

No student will be disadvantaged for making a complaint in good faith. If, however, after investigation, a complaint is suspected to be malicious, such suspicion may be investigated under the terms of the Procedure for Dealing with Breaches of the Student Code.

Anyone wishing to make a complaint under the Procedure for Dealing with Breaches of the Student Code should contact the Student Support Services Officer for advice at studentsupport.sligo@atu.ie

Course/Semester Deferrals or Withdrawals

If you're struggling with your course, for any reason, talk to your Head of Department or Course Coordinator and find out your options.

If you wish to withdraw from or defer your entire course or a semester, it is essential to formally do so by completing the relevant Withdrawal/

Deferral in advance of the deadline dates. Forms are available at Withdrawal or

Deferral of Study for Full Time Students on the Student Portal.

Failure to do so may cost you money:

- It may affect any refund of fees you have paid.
- It may also result in you being liable for tuition fees if you return to study at a future date.

An examination deferral is an entirely different process. For further information on exam deferrals, please refer to the Examinations section of this guide and Examinations on the Student Portal.

Data Protection

In order to achieve the mission of the University and fulfil our statutory obligations we create, gather, store and process large amounts of data on a variety of data subjects such as on students (both potential, current and former), staff, third parties and members of the public. Our use of personal data ranges from CCTV footage, to the processing of students' details throughout their journey, from application to graduation.

Our Student Privacy Notice explains how the University collects, uses and shares your personal data, and your rights in relation to the personal data we hold. The privacy notice concerns our processing of personal data of past, present and prospective students of the University.

For ATU's Data Protection Policy and more visit www.atu.ie/data-protection

Examinations

The Academic Affairs manager has oversight for admission, registration, conducting examinations, certifications and conferring. The Assistant Registrar has oversight for academic policies and procedures, and the implementation of quality management for all programmes.

Regulations and Timetables

All students are required to familiarise themselves with

- Examination Regulations and
- Marks and Standards

which are available at:
www.atu.ie/sligo-examinations

Examination Timetables are posted on the website 4 weeks before the start of main exam sessions. They are subject to change, so it is your responsibility to check on a regular basis.

www.atu.ie/sligo-examination-timetables

You do not need to register for the first attempt at any examination, this is automatic.

Deferral of examinations

An application for a deferral of a final examination or an assessment can be made to the Examinations Office, with the relevant third-party documentation no later than 4 days after the last timetabled exam. You cannot apply for a deferral if you have attempted the exam. Incomplete applications will not be accepted. Students who are awarded a deferral of module are automatically re-registered for the next examination session by the Examination Office.

There is no fee for the deferral application. However, once the deferral has been approved, a charge of €100 per year/2 Semesters, will be applied to the students' account. This fee is the re-registration fee for the deferred module(s).

Full detail available at <https://www.atu.ie/sligo-repeat-examination>

Consideration of events that may have affected examination performance

If you attempted an exam but believe that your examination performance was adversely affected by bereavement, accident, illness or other serious personal disruption, you can make an application for special consideration by the Examination Board(s). The application is made to the Examinations office no later than 4 days after the last timetabled exam. Consideration will not be given to late requests or those that are incomplete. There is no fee.

Full details available at <https://www.atu.ie/sligo-examinations-documents-and-policies-contacts>

Disciplinary Procedures for students (examinations)

The University has a procedure for to deal with of alleged breaches of student discipline in relation to examinations. This is available at <https://www.atu.ie/sligo-documents-disciplinary-procedure-for-student-examinations>

Examination Issues

If you have concerns regarding your examinations, you should contact:

- Examination Invigilators in Exam Halls
- Your Head of Department or Course Co-ordinator
 - **School of Business and Social Sciences:**
Amanda Harrisson
Administrative Manager
071 930 5252
businessandsocialsciencesadmin.sligo@atu.ie
 - **School of Science:**
Deirdre Collery
Administrative Manager
071 93 05342
scienceadmin.sligo@atu.ie
 - **School of Engineering and Design:**
Annica Rasmark
Administrative Manager
071 930 5495
engineeringanddesignadmin.sligo@atu.ie
 - **Examinations Office -**
examinations.sligo@atu.ie

Module Exemptions:

If you think you may be eligible for exemption from modules based on prior certified or experiential learning then contact Sarah Johnston, RPL Coordinator, ATU Sligo.
sarah.johnston@atu.ie

Publication of Results

Examination results for all exam sessions are released to your Student Account as per the dates on the Academic Calendar.

Detail available at:
www.atu.ie/sligo-examination-results

No information regarding results is ever given over the telephone, and results will not be released if there are fees outstanding. All transcripts will be released by DigitaryCORE and students will be advised of the release dates by email to their ATU Sligo student email accounts. It is important to regularly check this email account. Further information at: www.atu.ie/sligo-examination-results

Understanding Your Overall Academic Standing Result

Special purpose awards / Certificates

These awards are given without classification. Your certificate will be provided electronically through your DigitaryCORE account.

Higher Certificate / Degree

Merit 1, Merit 2:

This means that you have been awarded a Higher Certificate (Level 6), or Ordinary Degree (Level 7) with Merit 1 or Merit 2, depending on your performance and may be conferred with this Award in due course.

Merit 1:

A GPA (Grade Point Average) of at least 60.0% of the total available marks.

Merit 2:

A GPA (Grade Point Average) of at least 50.0% of the total available marks.

Distinction:

This means that you have been awarded a Higher Certificate (Level 6), or Ordinary Degree (Level 7) with Distinction, and may be conferred with this Award in due course. A GPA (Grade Point Average) of at least 70.0% of the total available marks.

Honours Degree:

This means you have been awarded a Bachelor's Degree Honours (Level 8) may be conferred with this degree in due course.

First Class Honour:

A GPA (Grade Point Average) of at least 70.0% of the total available marks.

Second Class Honours, Grade 1:

A GPA (Grade Point Average) of at least 60.0% of the total available marks.

Second Class Honours, Grade 2:

A GPA (Grade Point Average) of at least 50.0% of the total available marks.

Exemptions Granted:

This means that you have gained exemptions in the modules indicated and you are exempted from further examination in this module. However, you are required to retake all other modules in order to complete this stage of your studies.

Fail:

This means that you have failed to achieve any exemptions and must retake all subjects from this examination sitting.

Students with an overall result of Fail, Withheld, Deferred or Exempt must repeat those subjects which they have not passed or not yet presented in.

Withdrew:

This result indicates that you have formally withdrawn from the course. The results on your statement represent results achieved in examinations and continuous assessment completed in those subjects prior to your departure.



Consultation Days

Consultation or Feedback days will take place for 1-2 days immediately after the release of Semester 1 and Semester 2 results. It is very important that that you use the consultation day if you want to: get feedback or a breakdown of your assessment /exam in a module, request a formal re-check of a your grade, discuss weaknesses in your assessment performance find out what your repeat requirements will be.

Email your lecturer and request a meeting, which can be either in person or online. It is important that you use this opportunity as academic staff cannot be contacted during academic leave after the 20 June.

Review of Examination Results

If you have consulted with your lecturer during the Consultation Days and you feel you have grounds for a review and appeal, you can submit an application for this. The procedure and form for the request for review are available on the ATU Sligo website, Student Portal, Examinations section.

<https://www.atu.ie/sligo-examinations-documents-and-policies-contacts>

This gives details of the timescale and fees. Requests for review will not be accepted after the closing date.

An Appeal of a module result means the consideration of all matters relating to examinations, excluding the content and marking of examination scripts but including the application of the examination regulations, standards and extenuating circumstances not already considered.

You must have grounds to apply for a review and appeal. For any queries related to appeals please contact

appealresults.sligo@atu.ie Please note all appeal applications must be made no later than three days after the release of Semester 2 results. The academic calendar is available at <https://www.atu.ie/sligo-academic-calendar>

Filming and Photography

Occasionally the ATU Marketing Department commissions filming and photography on campus for promotional purposes. On these occasions signage will be erected in the public areas to alert students and staff that filming and/or photography is taking place. We ask students, if you do not wish to appear in the background of any recording, please do not enter such areas at these times.

Any student directly participating in a photoshoot will be asked to give their written consent for images to be used in the promotion of ATU Sligo, i.e., prospectus, website, social media. Students who have an interest in Marketing, Media or PR or would like to gain valuable work experience for their CV e.g., event management or social media marketing should contact the Marketing Office, marketing.sligo@atu.ie.

Opportunities are also available for paid Student Ambassador work.

Freedom of Information

ATU is a body established for a public purpose and thus falls within the scope of the Freedom of Information (FOI) Act 2014. Under the FOI Act, anyone is entitled to apply for access to records held by ATU which are not otherwise publicly available. While the main objective of the Act is to promote a culture of openness, transparency, and accountability in public bodies, it is sometimes necessary to exempt certain types of records from release.

ATU Sligo makes personal records available to individual students by arrangement and having regard to privacy, confidentiality and the well-being of the requester in the case of health records. Applications must be made in writing to the relevant section e.g., health service.

- For correction of personal information relating to oneself held by ATU where it is inaccurate, incomplete, or misleading; and
- Access to reasons for decisions made by ATU directly affecting oneself.

Requests must be made to the Freedom of Information Officer at foi@atu.ie

A valid request must state that it is made under the FOI Act 2014; it must provide enough detail to enable the records to be identified; and it must specify the preferred form of access. For more information please see www.atu.ie/freedom-of-information

Fitness to Practice

ATU Sligo is committed to broadening access to education and to ensuring that learners of all backgrounds, identities and abilities are enabled and encouraged to enter, successfully participate in and complete higher education. Many programmes in the University require students to complete aspects of their learning in professional settings, placing them in direct contact with professional practitioners and members of the public. The University considers it essential to protect all parties concerned, including patients, clients,

service users, customers, or colleagues from harm, and to maintain the trust and confidence of the general public in the University and its graduates.

A policy and procedure on Fitness to Practice has been developed in recognition of the University's duty of care to the public as well as to support students in fulfilling programme requirements and to prepare them for future professional practice. While the Student Code outlines the expectations of the University regarding student conduct and behaviour generally, "Fitness to Practice is concerned with those issues that affect a person's ability to practice in their profession" (CORU,2015). It includes the skills necessary to undertake and complete a programme with professional practice, experiential learning or clinical work, safely and effectively, so the student can fulfil his/her responsibilities within the scope of practice in their chosen field. For further detail, please see ATU Sligo Fitness to Practice Policy at <https://www.atu.ie/sligo-documents-fitness-to-practice-policy-procedure>

Garda Vetting of Students

ATU Sligo offers a number of programmes that require students to undertake placements with external agencies, which will bring them into contact with children and/or vulnerable adults and in which they will assume positions of public trust.

To meet ATU Sligo's obligations under the Acts, registration on these programmes is conditional on students successfully clearing the Student Vetting process.

To this end, it is necessary for ATU Sligo and the organisation accepting the student's placement to ensure a vetting disclosure is obtained from the National Vetting Bureau (NVB) for every student who is to take part in such a placement. ATU Sligo will usually have responsibility for obtaining the vetting disclosure and sharing the outcome with the placement provider concerned.

ATU Sligo reserves the right to request any student to undergo the University's Garda Vetting procedures. Any student who may be dealing with children and other vulnerable groups may be requested to undergo Garda Vetting even where this is incidental to participation in the programme concerned. Students holding positions of trust (Class reps, Peer Mentors, Officers of Clubs and Societies) may be subject to Garda Vetting so that only suitable candidates will be allowed take up such positions. Students applying for admission to the college who have a criminal conviction should notify the Student Affairs Manager in advance in accordance with the provisions of the ATU Sligo Criminal Convictions Policy. Students who fail to do so may encounter difficulties further into their studies that may prevent them from being able to achieve the learning outcomes for their chosen programme. For more information please see ATU Student Vetting accessible via the Student Hub at www.atu.ie

For queries in relation to your registration and admissions contact

Admissions Office Reception (registration) - admissions.sligo@atu.ie

Grants and Fees

For fee related queries, please email: feecollection.sligo@atu.ie

Visit Fees and Grants on our website, www.atu.ie/sligo-fees-and-grants

Grants - Third Level Student Grants

All new grant applications, including students changing their courses or progressing to new courses (be they add-on courses or otherwise), are to be made online through Student Universal Support Ireland, SUSI, <https://susi.ie/>

Students previously awarded grants by SUSI will be able to renew their application online and SUSI will notify them by email when this facility is available.

Fees

All students are responsible for the payment of a student contribution charge of €3,000 per academic year. On registration, students can choose one of the following options:

1. Pay 100% of your fees via Self Service Banner using your student login details.
2. Pay 50% by October 31st 2024, and 50% by January 31st 2025 via Self Service Banner using your login details.
3. Pay 20% on the day of registration, then 10% per month via Self Service Banner using your student login details. Eight monthly payments between October 20th to May 20th, full payments of fees by final deadline of June 1st.

To avail of this option please complete the Instalment Plan Form available on Fees & Grants - Atlantic Technological University Sligo (itsligo.ie)

Should a student already have paid their fee, the fee will be refunded on confirmation of SUSI award.

If a student fails to pay their fees, access to student services such as IT Services, may be removed until all fees are paid. Furthermore, where a student has not paid fees they:

- will not receive a formal transcript of exam results;
- will not be allowed to progress to the next year of studies, and
- will not be allowed to graduate.

If you have any concerns in relation to payment of fees, please contact feecollection.sligo@atu.ie at the earliest opportunity.

Free Fees Initiative (FFI)

The Department of Education pays Higher Certificate (Level 6), Ordinary Degree (Level 7) and undergraduate Hons Degree (Level 8) tuition fees for all full-time students who are citizens of a Member State of the EU and who meet the residency requirements.

The exceptions to this are repeat students, students who have achieved a qualification at the same level previously or students not meeting the FFI criteria. These students must pay their own tuition fees on top of the student Contribution Fee.

The fees set by the Department of Education and Science for the academic year 2023/24 are as follows (subject to change):

- Student Contribution Fee Composite EU Fees for students not entitled to FFI (includes both student contribution fee and tuition fees) **€3250**
- Higher Certificate (Level 6) **€3250**
- Ordinary Degree (Level 7) **€3250**
- Degree (other than Engineering and Architecture) (Level 8) **€3819**
- Architecture or Engineering Degree (Level 8) **€4450**

Tax Relief on Fees

If you do not qualify for free fees, you may be entitled to tax relief. Information may be obtained from Revenue, Information leaflet IT31, or revenue.ie The tax relief applies to both undergraduate and postgraduate course fees.

Useful Links:

www.atu.ie/sligo-fees-and-grants
www.susi.ie
www.studentfinance.ie

Students with Criminal Convictions

In accordance with the ATU Sligo Policy regarding Applicants with Criminal Convictions, students are obliged to notify the Student Affairs Manager of any criminal convictions that they may have. A student with a criminal conviction should note that their conviction could affect their ability to secure placement on relevant courses.

As a result, the University accepts no responsibility for students who are unable to complete their studies.

Please note that the University reserves the right to review participation of any student who has or who gains a criminal conviction on any of its programmes. For more information, please see ATU Sligo Criminal Convictions Policy at <https://www.atu.ie/sligo-documents-criminal-conviction-policy>

IT Services

How do you access the network/campus for the first time?

When you power on any PC on campus, you are directed to a login screen, asking for a username and password.

HOW DO YOU LOGIN FOR THE FIRST TIME?

ENTER YOUR STUDENT ID NUMBER AS YOUR USERNAME (example: - S10100578@atu.ie)

ENTER YOUR DOB (DDMMYYYY) AS YOUR PASSWORD

PRESS ENTER OR CLICK ON THE ARROW BUTTON TO LOG ON.

THE FOLLOWING MESSAGE WILL APPEAR ON YOUR SCREEN (THIS IS NOT AN ERROR MESSAGE):

THE USER'S PASSWORD MUST BE CHANGED BEFORE LOGGING ON THE FIRST TIME

PLEASE CLICK OK TO CHANGE YOUR CAMPUS LOGIN PASSWORD.

Student Email

It is important for students to regularly check their student email account as lecturers and almost all ATU Sligo correspondence is communicated with students via their student email account.

How do you access your student email account?

CLICK ON - Student Portal

THEN CLICK ON - STUDENT EMAIL

Go to www.atu.ie/sligo-campus and follow the steps below:

CLICK ON ACCESS EMAIL

USERNAME - studentnumber@atu.ie

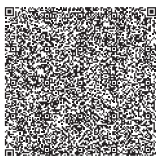
PASSWORD - SAME AS YOUR ATU SLIGO CAMPUS LOGIN

Eduroam at ATU Sligo

Eduroam is a service that allows roaming research and educational users to obtain wireless network access more easily at participating sites. When attaching to the Eduroam wireless network at the visited site, users will be prompted to authenticate and should provide the credentials that they use at their home site. The user is then authenticated against an authentication server at their home site, and if authentication succeeds the user is granted wireless network access.

How to Access Eduroam:

- Request your ATU Wi-Fi username and password (scan the below QR code and agree to the usage policy). Once this is done, you will receive your new Wi-Fi username and password directly to your ATU student email account.



- Select Eduroam from the available list of Wi-Fi networks
- To access, you will be prompted for your:
- Username (Note this is not your student email address, example: - studentnumber@atuwifi.ie)

Moodle

What is Moodle?

- Moodle is ATU Sligo's current Learning Management System (LMS).
- IT Services are responsible for Supporting Technical Issues.
- Moodle enables lecturers to provide learning material (pdf, video, lecturer recordings, web links etc.) to students to access in their own time
- Moodle enables communication between lecturers and students
- Moodle provides assessment tools such as access quizzes
- Students can download assignments and upload solutions.
- Solutions can be verified using Turnitin.

How to Access Moodle?

Go to www.atu.ie/sligo-campus

CLICK ON - STUDENT HUB

CLICK ON - MOODLE

ENTER YOUR

USERNAME - STUDENT ID NUMBER

PASSWORD - SAME AS YOUR ATU SLIGO CAMPUS LOGIN

Reset your Password

Go to <http://password.atu.ie>

Choose first option and use **s00xxxxxx@atu.ie** as the UserID.

When changed give the new password a moment to synchronise with Moodle.

IT Services Student Support Help Desk

The help desk is located in E1011.

IT Support Student Helpdesk Opening Times

Monday-Thursday:
9am-12pm, 2pm-4pm
Friday:
9am-12pm

You should visit IT Services Technical support on the college website where most of your queries should be answered. For further assistance you can log a ticket on our helpdesk at <https://www.itsligo.ie/report-a-technical-issue/>

Computer Use Policy

www.atu.ie/sligo-it-services-policies



Student Health and Safety Guidelines

ATU Sligo wishes to ensure that your time as a student here is a safe and healthy one. ATU Sligo H&S Office is located at B1077 Email: healthandsafety.sligo@atu.ie

Legal Obligation

The main piece of legislation which governs health and safety in Ireland is the Safety, Health and Welfare at Work Act 2005. In accordance with Section 14 of the 2005 Act students at the University have the following responsibility: "A person shall not intentionally, recklessly or without reasonable cause - (a) interfere with, misuse or damage anything provided under the relevant statutory provisions or otherwise for securing the safety, health and welfare of persons at work, or (b) place at risk the safety, health or welfare of persons in connection with work activities."

ATU Sligo students are therefore required to:

- Take reasonable care to protect his or her safety and the safety of any other person who may be affected by the student's acts or omissions
- Cooperate with the safety systems and signage in place on campus
- Observe any safety rules and procedures which may be defined for working in laboratories, workshops etc

- Wear personal protective equipment as directed
- Not intentionally, recklessly or without reasonable cause, interfere with or misuse safety equipment
- Report immediately to the academic in charge or the Head of Department any accident resulting in injury which takes place on campus or on a trip organised by the University.

Health and Safety Rules:

- Smoking & Vaping is prohibited within ATU buildings or on campus grounds.
- Observe the speed signs in the car park which are a maximum of 15 kph and be mindful of the presence of pedestrians
- Park in the approved spaces only and do not block emergency exits.
- Where indicated, wear the mandatory Personal Protective Equipment (PPE) in laboratories, workshops etc. Students must purchase their own PPE and are responsible to ensure that it is fit for purpose.
- Only use equipment in workshops or laboratories etc that you have been trained to use
- Report all accidents, incidents and near misses immediately to the academic in charge or to the Head of Department

- Ensure an Accident or Incident report form is completed and all students cooperate in any investigation to enable a thorough investigation to be undertaken to prevent similar occurrences in the future
- Undergraduate students are not permitted to work in the college buildings outside the designated opening hours, unless their work is directly supervised by a member of staff and in strict accordance with ATU Sligo "Out of Hours" Policy.
- At all times, exercise personal security precautions
- When going on field trips, ensure the person in charge has your emergency contact details
- In addition to the above, students must obey the Health and Safety rules of specific work areas such as laboratories, workshops, project rooms etc

Tobacco Free Zones

In accordance with the Public Health (Tobacco) Act 2002 and the Health (Tobacco) Amendment Act 2004 and under the Student Code, smoking and vaping is not permitted within ATU Sligo buildings or on campus grounds.

Accidents and Emergencies

You must report all accidents which occur on campus or off campus on an ATU Sligo organised activity to the Academic or organiser in charge of the event.

In the case of a medical emergency on campus, please call 071 9305333 for Emergency First Aid assistance.

The campus nurse can be contacted on 087 9961873 in the case of a medical emergency. To contact the Emergency Services, please contact 999/112.

Accidents which occur while playing sports on or off campus with an ATU Sligo team must be reported to the Coach in charge or to a member of staff if in the Knocknarea Arena.

Ensure you fill out an Accident Report form and forward it to the Health and Safety as soon as possible.

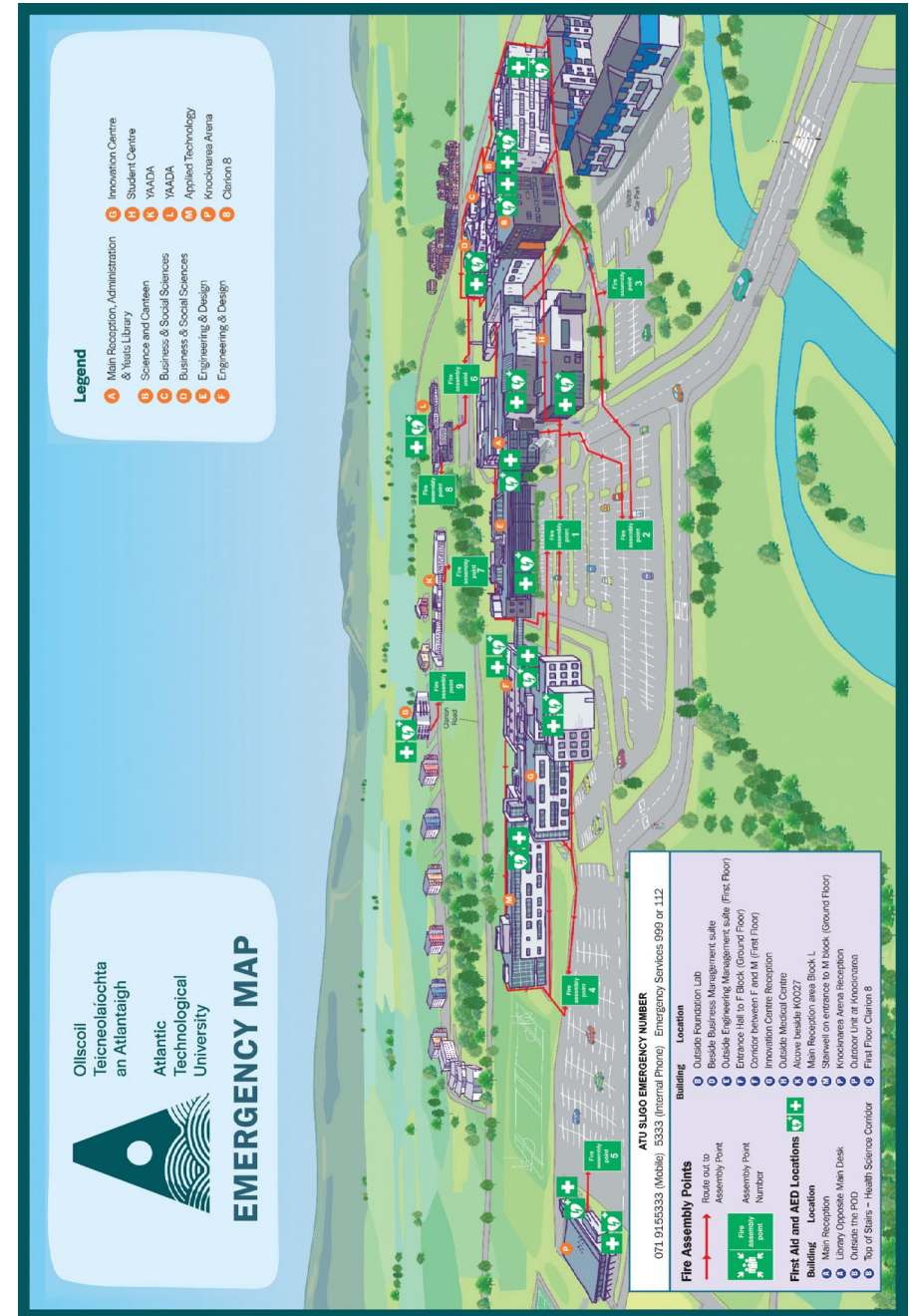
Evacuation Procedure

- Please ensure you are familiar with all of the emergency exits
- In the event of a continuous alarm, you must evacuate the building by the nearest fire exit to one of the designated Fire Assembly points located in the Campus Car parks
- You must obey the instructions given by staff
- You must not re-enter a building until you are told to do so by a member of staff

Students who fail to cooperate with Health and Safety Procedures will be subject to ATU Sligo Disciplinary Procedures.

ATU Sligo and COVID 19

If you are diagnosed with Covid, we ask that you do not attend campus and that you follow the latest HSE Guidelines at <https://www2.hse.ie/conditions/covid19/>



Section 03

Directory of Supports and Services



Careers Office



Adette Ring



Deborah Seddon

Access Office



Linda McGloin



Lesley Walsh



Conor Cooney

Maths Support Centre



Paul Press

Academic Writing Centre



Aoife Murray



Dr John O'Callaghan

Disability & Learning Support



Dr Shelley Brady



Andrea Rynn

International Office



Patrick Lynch



Stephanie Aldridge



Declan Reidy



Patrick McDonald

Student Health Services



Eilish Corley



Caroline Kennedy Crawford



Angela Killeen

Student Counselling Service



Dr Siobhán McNally



Anne Rooney



Fiona O' Donnell

Student Support Services



Catherine Mc Nelis



Cassie Collum

Healthy Campus



Yvonne Kennedy

Student Success



Judith Frazer-Klug

Wellbeing



Helen Campbell



Liam Coleman



→ Maths & Engineering Support Centre
Academic Writing Centre
Learning Support Service
Occupational Therapy



Academic
Writing
Centre

Supporting students
achieve their potential



Directory of Student Supports and Services

71

Student Guide 2024-2025

The Aim of Student Support Services at ATU Sligo is to provide a comprehensive and caring service to help our students achieve their full academic and personal potential. They include

- Academic Writing
- Maths & Engineering Support
- Access Office
- Disability & Learning Support
- Careers Service
- International Office
- Pastoral Care & Chaplaincy Service
- Student Counselling Service
- Student Health Service
- Wellbeing
- Yeats Library, ATU Library Services
- ATU Sligo Students' Union (ATUSSU)

Our Motto is “Caring For Our Students”

STUDENT SUPPORT SERVICES OFFICER

The Student Support Services Officer is available to see students about any personal, general or welfare issues.

To make an appointment email studentsupport.sligo@atu.ie

Academic Writing Centre

ACADEMIC WRITING TUTORS



Aoife Murray **Dr. John O'Callaghan**

E: writing.sligo@atu.ie

Instagram: [@atu_sligo_writing_centre](https://www.instagram.com/atu_sligo_writing_centre)

X: [@atusligowriting](https://twitter.com/atusligowriting)

Supporting students to achieve their potential

Whether you are new or returning to university, we understand that writing academic assignments can be challenging. That is why the Academic Writing Centre offers free support to all students studying at ATU Sligo.

Located on the ground floor of the Yeats Library, the centre provides 1:1 appointments with experienced writing tutors in a friendly and supportive environment. Additionally, the centre offers a variety of freely accessible academic writing workshops, writing guides, recorded tutorials and other online academic writing resources.

How we can help

While the centre is not an editing or proof-reading service, we can support you in acquiring the skills to complete your assignments and achieve your academic potential:

- Getting started with an assignment: planning, outline and structure
- The writing process: generating ideas, drafting, revising and editing
- Critical reading and effective notetaking
- Avoiding plagiarism: citation, referencing and paraphrasing
- Developing an argument: critical thinking and writing
- Reflective writing, report writing and writing for literature review
- Thesis writing
- Successful writing in exams
- Grammar, punctuation and spelling

How to Access Support

You can access academic writing support in a number of ways:

- **1:1 appointment:** Whether you are unsure about academic writing expectations, have specific queries or need advice on how to improve a draft assignment, our tutors will provide guidance at any stage of the writing process. Appointments are available in-person or online.

- **Online resources:** Our series of academic writing guides contain recorded tutorials and downloadable resources covering essential topics in academic writing. These valuable resources are accessible at any time and from anywhere, providing practical tips and guidance to support your academic writing.
- **Academic writing online programme:** This free, self-directed, and interactive programme is designed to enhance the academic writing skills of all students. Whether you are new to writing at 3rd level or seeking to improve your writing abilities, this programme is suitable for you. Each unit within the programme focusses on a crucial aspect of academic writing and includes various examples, activities, quizzes, and downloadable resources to support the content.
- **Academic writing workshops:** We provide free workshops throughout the year, available both on campus and online. These workshops will be advertised, and all students are welcome to attend.

The supports of the Academic Writing Centre can be accessed through the Academic Writing Centre Moodle page. Scan the QR Code or go to www.atu.ie/sligo-writing-centre for more information.



Maths & Engineering Support Centre

DIRECTOR



Paul Press
E: paul.press@atu.ie

MATHS & ENGINEERING SUPPORT TUTORS:



Amit Goswami



Fearghus Downes



Faizan Munawar



Nimra Munir

Supporting students to achieve their potential

The Maths & Engineering Support Centre offers free support to students at ATU Sligo in mathematical aspects of their studies through providing guidance, tutorials, and content creation. We are located on the ground floor of the Yeats Library in A0048, and have a team of enthusiastic, qualified maths tutors available to assist you in your studies on campus and online.

How to Access Support

- **Drop-in Service:** Call by the Maths & Engineering Support Centre in A0048 located on the ground floor of the campus library.
- **1:1 Appointments:** Book a 1-1 online timeslot with one of our maths support tutors, upload your attempts at questions that are working on, and we'll provide 1-1 support on the step-by-step methodology arriving to the solution.
- **Group tutorial sessions:** Tutorials can be arranged for an individual class in order to supplement the material that is provided during lectures.
- **Online resources:** We have recorded and documented tutorials covering various mathematical topics in science, business, & engineering. Videos, downloadable notes, and interactive learning applications are available for self-paced remote learning.

- **Website & Moodle Page:** For more information on our centre please visit our ATU site:



Not sure where to begin?

Drop by the Maths & Engineering Support Centre. Let us know what course you are studying, and we can start from there. This Centre is here so that you can work at your own pace, and we will meet you where you are at.

For some, it is the first time they've returned to education in years, and they may need to build up a solid foundation in the mathematics that they will be using during their studies. Others may be in their final semester and want assistance in improving their grades from a 2-1 to a 1-1.

We create a space where students can focus the problem and mitigate the risk of becoming overwhelmed by providing stability, and gentle structured guidance. The sooner you call by, the sooner we can help!

Access Office

ACCESS OFFICER



Linda McGloin

E: linda.mcglain@atu.ie

The role of the Access Office is intended to encourage and support categories of students who have not been traditionally represented in third level education to make the transition to third level education and to participate fully and progress within their course of study. Specifically, these are students from disadvantaged backgrounds and mature students.

Appointments with Linda are by prior arrangement only and she will provide you with details on how to find her.

ASSISTANT ACCESS OFFICER



Lesley Walsh

E: lesley.walsh@atu.ie

Student Assistance Fund

The Student Assistance Fund (SAF) provides financial support to full-time or part-time students in higher education on courses of not less than one year's duration. It is expected that applicants would be experiencing acute or unexpected hardship when applying.

The SAF is designed to provide financial support in addition to the student grant.

If you have any queries, please contact Lesley Walsh on lesley.walsh@atu.ie

SAF is available to help students with the following costs:

- Books & class materials
- Rent, heating, and lighting bills
- Food
- Travel of an urgent or essential nature
- Medical costs
- Family difficulties, for example bereavement
- Childcare costs for students that are parents (non-registered only). All childcare costs (registered) please apply to the national childcare scheme [ncs.gov.ie/en/](https://www.ncs.gov.ie/en/)

SAF Funding does not cover the following:

- Tuition fees/registration fees
- Student loan repayments
- Students on courses that do not lead to a higher education award.
- International/non-EU fee paying students.

How do I apply?

Watch your student email at the start of the academic year for information on opening and closing dates, instructions on how to apply, and information on what documents will be required. Information will also be available on all social media platforms and our website.

The Student Assistance Fund is managed by the Higher Education Authority on behalf of the Department of Further and Higher Education, Research, Innovation and Science.

LAPTOP LENDING SCHEME



Conor Cooney

E: conor.cooney@atu.ie

Due to increased reliability on technology within the 3rd level education sector, ATU Sligo is happy to be able to operate a laptop lending scheme funded by the Higher Education Authority. This scheme is aimed at students who do not already have access to a laptop and who cannot afford to purchase one. In order for a student to be eligible for the scheme they must first be a registered student for the current academic year, and be able to provide evidence of one of the following:

1. Be in receipt of a SUSI Grant.
2. Be in receipt of a Social Welfare payment.
3. Be registered with our Disability or Learning Support Services.

There are a limited number of laptops available and students are advised to apply only if there is a genuine need for the loan of a device. Applications will be processed on a first completed and submitted - first served basis. If you would like to request an application form to apply to the scheme, please email Laptopscheme.sligo@atu.ie

Disability Support Office

DISABILITY SUPPORT OFFICER



Dr. Shelley Brady

E: disability.sligo@atu.ie

Students with Disabilities

ATU Sligo's Disability Service is here to support and assist students with a Disability, Mental Health Condition or Significant Ongoing Illness. We have developed a clear student-led service that will work with you as you transition through ATU Sligo and into employment.

The supports we offer are designed to enable you to work through the demands of university and be ready for the world of work. It is very important that every student with a disability registers with the Disability Office at the beginning of first year and makes contact at the beginning of each subsequent academic year. To disclose a disability or to discuss issues of concern, students can make an appointment by emailing **disability.sligo@atu.ie**.

For more information, please scan the QR code:



INCLUSION SUPPORT WORKER



To be appointed

E: inclusionsupport.sligo@atu.ie

Autistic Students

The Inclusion Support Service offers neurodiversity-affirmative support to autistic and other neurodivergent students who are registered with the Disability Service in ATU Sligo.

We understand that autistic and neurodivergent students experience unique challenges at university, while also possessing their own unique strengths and talents. In one-to-one sessions with the Inclusion Support Worker, students are encouraged to build on their strengths, to be aware of their needs, and to identify ways to effectively advocate for themselves. Students are supported to develop key skills in areas such as self-advocacy, organisation, and time management, where needed. Of course, university is more than just academics, so the service also facilitates group activities such as the autistic Ambassadors' group, study buddy service, and Neurodiversity Society, to provide more opportunities for students to make authentic connections with their peers.

The Inclusion Support Service can also arrange an autism screening for students who suspect they may be autistic. If necessary, a referral for psychological assessment can be arranged at no cost to the student.

To learn more about autism screening, assessment, or about supports for autistic students, contact **inclusionsupport.sligo@atu.ie** or visit our website.

LEARNING SUPPORT SERVICE



Andrea Rynn

E: learningsupport.sligo@atu.ie

As part of the Disability Support Service, the Learning Support Service provides learning support to students who have a specific learning difficulty such as dyslexia or dyspraxia.

Students who have a prior diagnosis should contact the Learning Support Tutor early in the academic year to discuss their individual needs and devise their LENS (Learning and Educational Needs Summary), which students can share with their lecturers.

There are many supports provided by the Learning Support Tutor to qualifying students including referral to the Assistive Technology Support Service for technological aids and specialised software. In addition, we assist in the organisation of pre-approved reasonable accommodations at end of term examinations, and with student consent, we liaise with relevant staff to ensure that students achieve their full potential at ATU Sligo.

Dyslexia screening can also be arranged for students who suspect they may have dyslexia and if necessary,

referral for a psycho-educational assessment can be arranged. For further information or to arrange an appointment, please e-mail **learningsupport.sligo@atu.ie**.

The Fund for Students with Disabilities is funded by the Irish Government and co-funded from the ESF Programme for Employability, Inclusion and Learning (PEIL) 2014 -2020

Fund for Students with Disabilities

The purpose of the Fund for Students with Disabilities, which is administered by the National Office for Equality of Access to Higher Education, is to provide resources to higher education colleges for the delivery of key services, reasonable accommodations and supports for learners with disabilities on full-time courses. The Fund aims to support the personal, educational and professional development of the participating learner and contribute to the achievement of their full potential. Following a successful application, funding is given to ATU Sligo for the purchase of supports such as specialised equipment, materials or technological aids, targeted transport services, sign language assistants/ interpreters or personal assistants, as appropriate.

Equipment purchased through this fund remains the property of the college and is given on loan to the student for the period of their studies at the University. The closing date for this fund is early in the academic year and this is one of the reasons why it is important to make contact with the Disability Officer or Learning Support Tutor at the commencement of the college year.



Careers Service



Adette Ring
E: careers.sligo@atu.ie



Deborah Seddon

The Careers Office provides information, advice and support to help you to plan and progress your career goals. We offer a blended approach to careers guidance, with campus and online services and activities.

Where to find us

On campus: Room B1077, adjacent to the 'Auditorium'. Online: via our Moodle page: 'Careers Office' and 'Careers Platform'.
Email: careers.sligo@atu.ie

Careers Appointments

We are here to help you to navigate your personal journey to employment. Whatever stage you are at in this process we encourage you to contact the Careers Office to find out how we can help you.

Please get in touch for a careers guidance appointment, help with your CV, interview preparation and support with writing an application form or personal statement. Appointments can be booked via email or or through the careers platform.

Careers Talks

We deliver career talks throughout the academic year both on campus and online. 'Thinking Ahead' topics include:

- *Thinking Ahead: Options with your Course*
- *Thinking Ahead: Preparing for Work Placement*
- *Thinking Ahead: Postgraduate study*
- *Thinking Ahead: Navigating the Changing Labour Market & Effective Job Search*
- *Thinking Ahead: Networking and Communication*
- *Thinking Ahead: Build Your Brand with LinkedIn*
- *Thinking Ahead: Writing a Personal / Motivational Statement*
- *Thinking Ahead: Effective CV Writing*
- *Thinking Ahead: Preparing for Interview Success*

Careers Events

The Careers Office has well established links with industry and organise a variety of campus based and online events throughout the academic year. Most Wednesdays throughout the academic year, we host companies on campus at '**Be Career Curious**' events and online via '**Webinar Wednesday**', our industry-led careers talks. Both initiatives provide you with the opportunity to grow your industry awareness, expand professional networks, increase job search skills and secure employment.

We host in the region of 120 companies at these events each year. **All careers events are open to all students.**

Jobs Board

We are due to launch our new careers and vacancy platform partnership in Autumn 2024.

Moodle

The Careers Office Moodle page is where you will find popular resources such as: CV writing advice and AI tools, interview preparation materials, 'Webinar Wednesday' playback links, Careers Office LinkedIn Learning curated material and access to several psychometric assessments for self-discovery and preparation for graduate assessment centres.

Digital Badge

We encourage all students to avail of the opportunity to achieve the '**Career Readiness**' digital badge. Access is via the 'Careers Office' Moodle page. This self-paced e-learning resource will provide you with useful strategies to help you to make effective career decisions and provide you with tools and insights that will be useful whilst at ATU and beyond.

International Office

INTERNATIONAL MANAGER



Patrick Lynch

INTERNATIONAL OFFICER



Declan Reidy

ERASMUS COORDINATORS



Stephanie Aldridge Patrick McDonald

SENIOR INTERNATIONAL STUDENT AMBASSADOR

Matthew Conlon Oates

**E: international.sligo@atu.ie
Erasmus.sligo@atu.ie**

ATU Global is located at A1013 which is on the main concourse and opposite the library.

The aim of the International Office is to support and develop internationalisation at ATU Sligo. We encourage all students to study abroad during their academic studies and we support international students who are studying at ATU Sligo.

We have a vibrant international community on campus and are keen to make your stay at ATU Sligo a memorable and productive one. We understand that there are challenges to studying abroad and we are here to help. We offer guidance and information about many subjects including:

- Erasmus+ & Study Abroad opportunities
- Irish Visa & Immigration
- Irish Residence Permit Cards
- Third Level Graduate Scheme
- Working Part-Time in Ireland

Erasmus+

The Erasmus+ scheme allows ATU Sligo students to physically study abroad at a partner European university for a period of 2 to 12 months. This is a great opportunity to enhance your language skills, make friends and learn in a new and challenging way.

Typically, students complete the application process in their second year and study abroad during their third year. We hold information sessions with each second-year class, but you can also get in contact with us directly if you have any questions or queries.

The program also permits student study mobility from Year 1 of undergraduate studies.

Students can also participate in a virtual or blended (mix of online and physical mobility) student study mobility. Under a blended mobility, the physical mobility component can be as short as 5 to 30 days.

Erasmus+ also funds students on work placement (2 to 12 months). This opportunity is also open to Graduate students (must apply in their final year). So, if you are planning to undertake a work placement as part of your course OR after you graduate please contact us to see how we can help.

Connect with us through:

Email: international.sligo@atu.ie

Twitter: [@atusligo_global](https://twitter.com/atusligo_global)





Pastoral Care & Chaplaincy Service:

E: pastoralcare.sligo@atu.ie

What is the Pastoral Care and Chaplaincy Service about?

The Pastoral Care & Chaplaincy team has a special interest in your total well-being whilst studying here at ATU Sligo. We value you as a person with a unique contribution to make to college life. We aim to create a sense of community by reaching out to students and encouraging them to develop their inner strengths in ways that contribute to the life of the University and wider community. The Pastoral Care & Chaplaincy team support students in their spiritual and personal growth during their time in university and help students who may experience illness, trauma or bereavement. Students are always welcome to drop into the office for a chat or to make an appointment. The Service is available to students of all faiths and to those who have none.

Where to find us

The Pastoral Care & Chaplaincy Office (Room H1016) and The Sanctuary (Room H1012) are located upstairs in the Student Centre. However, you don't have to be on campus to make contact. If it is more convenient for you please email.



The Sanctuary - Room H1012

The Sanctuary is the University multi-faith prayer room. It is open during regular college hours for students and staff to escape the rush of life and create a space for quiet reflection and prayer.

RESPECT: Preventing Gender-Based Violence

SEXUAL VIOLENCE PREVENTION AND RESPONSE MANAGER



Caitríona Gleeson

E: Caitriona.Gleeson@atu.ie

Caitríona manages and leads the RESPECT team through the development and oversight of strategy, policy, best practice training events and programme management.

SEXUAL VIOLENCE PREVENTION AND RESPONSE OFFICER



Elaine Mears

E: Elaine.Mears@atu.ie

Elaine supports the Sexual Violence Prevention and Response Manager. She coordinates and develops training and awareness programmes. If you want to find out more about the work that they do or what supports are available, contact Elaine.

RESPECT: Preventing Gender-Based Violence

ATU RESPECT is a new programme and support service which is being developed to prevent and respond to gender-based violence.

ATU recognises that all forms of gender-based violence are unacceptable and we are committed to creating, promoting and maintaining a culture in which all forms of gender-based violence will not be tolerated.

Whilst gender-based violence disproportionately impact women, men are also victims. It is rooted in systemic power differences and imbalances. Gender-based violence also disproportionately impacts those with intersecting identities including people with disabilities, LBGTQI+ people and ethnic minorities.

RESPECT provides a confidential service in line with best practice. If you or someone you know is affected by any form of gender-based violence, or, for further information about RESPECT, contact respect@atu.ie



Student Counselling Service

COUNSELLORS



Dr Siobhán McNally



Anne Rooney



Fiona O' Donnell

E: counselling.sligo@atu.ie

The Student Counselling Service is a confidential student support available free of charge to all registered ATU Sligo students.

Located: Ground Floor of the Student Centre, just beside the Student's Union.

Opening Hours: Monday to Friday 9.00am to 4.00pm

Closed daily for Lunch: 12.30pm to 1.30pm

What is Counselling?

Counselling offers students the opportunity to explore any issue which may be impacting on your mental health and wellbeing.

Confidentiality

Confidentiality is a central part of the counselling process.

All information given by you to your counsellor is confidential and won't be disclosed to anyone outside of the Student Counselling Service. The only exceptions to this would be if there is a concern about immediate risk to you, a third party, or any criminal activity.

Making an Appointment

The Counselling Service operates on an appointment basis only. Appointments can be attended in person, on Microsoft Teams or by telephone. If you would like to make an appointment, please email: studentcounsellingservices.sligo@atu.ie

Outside of Office Hours

In the case of an Emergency please access the following supports:

- **CALL 999 or 112** in the event of an emergency;
- **ED: visit your Accident & Emergency Department;**
- **CareDoc Sligo: 0818 365399**
- **TEXT Crisis Textline:** For free 24/7 support in a crisis, text ATU to 50808
- **Ring the Samaritans 24/7 on Freephone 116 123**

- **Pieta House; 1800 247 247 (24-hour helpline) or Text HELP to 514444**

There are lots of ways you can take care of your Mental Health. Whatever your circumstances, there are things you can do to help manage your fear, stress, and anxiety and to protect your mental health:

- **Talk to your Family and Friends** about how you are feeling,
- **Make time to Exercise and Keep Fit,**
- **Making time to Relax,** having some time to yourself everyday as much as possible,
- **Having a Healthy Diet and good Sleeping Routine,** and
- **Being aware when you are very Self-Critical,** and practicing being a little bit kinder towards yourself

For further information click on: www.atu.ie/sligo-student-support-services-counselling

Mental Health Promotion

Throughout the year, the service runs several mental health promotions. The Student Counselling Service hosts a page on the ATU Sligo website providing information on a wide range of mental health issues including; Anxiety/Anxiety Attacks, Depression, Loss and Bereavement, Eating Disorders and Alcohol/Drug Misuse.

For further information click on: www.atu.ie/sligo-student-support-services-counselling

Student Health Service

STUDENT HEALTH NURSES



Eilish Corley



Caroline Kennedy Crawford



Angela Killeen

T: 071 930 5463 / 071 930 5205

E: studenthealthservices.sligo@atu.ie

The Student Health Service in ATU Sligo cater for the medical needs of students while they are away from home, and it is not possible to visit their own GP. It offers both virtual and face-to-face consultations in a modern health suite, which is conveniently located on the campus grounds.

The mission of the service is to provide quality health care that is tailored to a student's individual needs. The unit is staffed by a team of nurses and doctors who have extensive experience in student health issues. They offer medical care and specialist clinics to all registered students and apprentices throughout the academic year.

The Student Health Service aims to provide a student friendly service with special attention given to preventative medicine, health promotion and encouraging healthy lifestyles.

Student medical records are completely confidential and maintained in the health centre. Consent must be obtained from the student prior to disclosing records to any third party.

How the Service Operates

The Student Health Service is a nurse-led service. All students must first be assessed by the Nurse and those requiring referral to the Doctor will be given an appointment for the medical clinics, which are also based in the Student Health Centre. The service is not intended to replace your own GP.

Students with a chronic condition, disorder or disability which may require specific support or monitoring are advised to make themselves known to the Student Health Service as soon as possible after registration so individual care needs can be assessed.

Opening Hours

Monday to Thursday: 9am to 4pm

Friday: 9am to 2pm

Closed Daily for Lunch: 12.30pm to 1.30pm

Out of hours medical care

Students requiring GP out of hours medical care can call **Caredoc Sligo** on **0818 365399** between 6pm and 9am. There is a fee for non-medical card holders. For medical care between 5-6pm please call **Medicentre GP** surgery on **071 914 2550** for details of the doctor on call.

Making an Appointment

The Student Health Service operates on an appointment only basis. We offer both in-person and virtual consultations. If you would like to make an appointment, please contact us by phone or email. Prior to your first visit, please complete the Registration Form on our ATU Sligo Student Health webpage at <https://www.atu.ie/sligo-health-services>

Fee

The Health Service is available without charge during office hours, to all registered students throughout the academic year. Out of hours care is available at CareDoc for a fee (0818 365 399).

Sick Certification

The Student Health Service has stringent guidelines on the issuing of sick certs.

- Certification will only be issued by the Student Health Service if absence from college is medically recommended.
- No backdated certs will be issued.
- If you have been treated by your own GP/ Emergency Department, they should issue the medical cert.

Advice for using the service

- Be aware that accidents and medical emergencies will always be given priority.
- Remember to call/email early to make an appointment as appointments book up quickly. We operate on "a first-come first-served basis".
- Repeat prescriptions can be ordered online through the student health website www.atu.ie/sligo-health-services
- Please let us know at least 2 hours ahead if you cannot keep your appointment with the Doctor. Students who fail to do so will be fined €20.
- All prescriptions will be sent electronically to your nominated pharmacy.

Accidents and Medical Emergencies on Campus (office hours)

In the case of a medical emergency on campus please call 071 9305333 for Emergency First Aid assistance. The campus nurse can be contacted on 087 996 1873 in the case of a medical emergency. To contact the Emergency Services please contact 999/112.

Health Promotion

We are keen to actively introduce students to healthy lifestyle choices.

We encourage students to access our website to gather information and advice regarding many health issues relevant to students. www.atu.ie/sligo-health-services

Student Health App

Students are also encouraged to download the studenthealthApp free of charge. It provides students with reliable and relevant health information on over 125 medical topics.

Additional services on offer at the Health Service include:

- Flu vaccine clinics
- Women's health clinics
- Sexual Health Clinics
- Cryotherapy Clinics
- Smoking Cessation Referrals
- Referral Service for Alcohol and Drug Misuse
- Referrals to Eating Disorder Service

- Physiotherapy service: Provided by "Fix You Physio" offering student rates. To make an appointment call **071 931 7210** or email **info@fixyouphysio.com**

Please access our webpage on the student portal at ATU Sligo or email **studenthealthservices.sligo@atu.ie** for more information on clinics.

Immunisations and Vaccinations

In the interest of the health and safety of all who work and study in the University, we recommend that students have all their vaccinations/immunisations before registration. These vaccinations include Diphtheria, Tetanus, Whooping Cough, Hib, Polio, Meningitis C, MMR (measles, mumps, rubella). Please check your family records and consult with your GP for information and advice. Students who are undertaking specific science and social studies courses may require Hepatitis B vaccination for work placements. Student are advised to refer to the University prospectus and contact their own GP for vaccination recommendations.

Student Success

STUDENT SUCCESS OFFICER



Judith Frazer-Klug

Email: @atusligowellbeing

The Student Success Officer plans induction and the #First5weeks welcome programme as well as supporting initiatives to enhance the Student Voice across ATU including the National Student Survey. Judith also supports the implementation of the Student Success Strategy. The Strategy aims to ensure that every ATU student will:

1. have a positive and valued outcome from their education journey
2. have a meaningful and engaging learning experience
3. have supportive experiences in all their interactions with ATU on their student journey have the support to perform to their maximum potential
4. participate in a lively, creative and inclusive learning community, based on the principles of academic freedom, academic integrity and student partnership
5. achieve graduate outcomes that will provide a basis for lifelong personal and career fulfilment

You'll get to know Judith through the events and activities running across the #First5weeks - your feedback is really important so she is always happy to hear from you about how we can improve your experience at ATU!

Wellbeing

Student wellbeing is paramount at ATU Sligo. If you are happy and healthy you are more likely to have a better experience at university. The wellbeing team offer a range of initiatives which aim to increase student wellbeing and mental health awareness during the academic year. Their work will build on and complement other initiatives undertaken by Healthy Campus and the Students' Union.

MENTAL HEALTH AND WELLBEING PROJECT OFFICER



Liam Coleman

Email: liam.coleman@atu.ie

Instagram: [@atusligowellbeing](https://www.instagram.com/atusligowellbeing)

The Assistant Psychologist works as part of the ATU Sligo Student Wellbeing Team. You will get to know Liam through the delivery of mental health initiatives and facilitating class talks. He also works closely with students and staff to organize events which support student's mental health and well-being.

MENTAL HEALTH AND WELLBEING PROJECT OFFICER



Helen Campbell

Email: helen.campbell@atu.ie

Instagram: [@atusligowellbeing](https://www.instagram.com/atusligowellbeing)

The Mental Health and Wellbeing Project Officer will work in developing partnerships on campus for the promotion and protection of student Mental Health. Helen supports the implementation of the National Student Mental Health and Suicide Prevention Framework and the National Framework for Consent (Safe, Respectful, Supportive and Positive - Ending Sexual Violence and Harassment in Irish Higher Education Institutions) at ATU Sligo. You will get to know Helen through initiatives such as the delivery of the Active*

Consent programme as well as mental health initiatives including Hang Out Hub and Connect Café, recognizing empowerment, participation, and inclusion as key values to supporting students' wellbeing.

HEALTHY CAMPUS COORDINATOR



Yvonne Kennedy

Email: yvonne.kennedy@atu.ie

  [@atuhealthysligo](https://www.instagram.com/atuhealthysligo)



The Healthy Campus coordinator leads on supporting and implementing the National Healthy Campus Charter and Framework at ATU Sligo. The Framework aims to create an overall environment and culture that enhances the health, wellbeing and sustainability of all members of its community and enables them to achieve their full potential. You will get to know Yvonne through her organisation and delivery of a range of initiatives focused on a balanced lifestyle, good physical and emotional health, encouraging and supporting everyone to take responsibility for their personal health and wellbeing.

Yeats Library

LIBRARIAN



Dr Johanna Archbold

Email: library.sligo@atu.ie

Web: www.atu.ie/library and go to 'Sligo'.

The Yeats Library is situated centrally on campus, just off the main concourse. The Library contains a range of individual and collaborative study spaces available to all students as well as facilities onsite such as computers, print/copy/scan and height-adjustable desks. Physical book collections are available to borrow and over 100,000 e-books are accessible online as well as extensive databases and other online resources. The Library team are available onsite and online for support and offer a range of tutorials that students can avail of to develop skills in searching, information literacy, research skills and getting the best from the Library. Email us at any point with queries.

Resources accessible through the Library include:

- Books and e-books
- Journals and articles
- Scholarly databases
- Newspapers
- Theses
- Multimedia
- Official publications and many other resources.

Services offered by the Library include:

- Live Chat from the Library website
- Bookable Group Study Rooms
- Self-service borrowing & renewals of books
- Postal Loans for Online Students
- Inter Library Loans for items not in the Library collections
- Library Guides giving detailed guidance on collections & how-tos
- Library Tutorials on subjects from finding library resources to using referencing software.
- One-to-One appointments for students

For more information, go to <https://www.atu.ie/library> and go to 'Sligo'. Watch out for the Monthly Library Newsletter in your email and follow ATU Library on Social Media for the latest updates. We look forward to seeing you onsite or online during the academic year.

Students' Union - ATUSSU

T: 071 914 1887

E: support@atussu.ie

Facebook / Twitter / Instagram

Make sure you drop in at some stage and visit all the officers in the ATUSSU Office on the ground floor of the Student Centre. They are here to help you set the right balance between your studies and your social life.

For more information, you can visit our website at atussu.ie

They hope to see you soon and that you have a very successful and enjoyable year.

SABBATICAL OFFICERS

PRESIDENT



Julia Bocianowska

T: 071 914 1887

E: president@atussu.ie

Julia is your Students' Union President for the academic year 2023/24. Julia has taken time out from her degree in Fine Art to be President and this is her second year as a Students' Union officer.

As the President of ATUSSU, it is Julia's job to be the CEO of the Union. She is responsible for implementing all Union policy in the college.

She represents students on the University's Governing Body and a whole host of additional committees and sub-committees and ensures that the student's voice is heard at these meetings.

This year of course there will also be a strong emphasis on bringing the Students' Unions in Sligo, Galway, Mayo and Donegal together as one, for the student's benefit in the Atlantic Technological University.

VICE PRESIDENT / ACADEMIC LIFE



Eliska Hribalova

T: 071 914 1887

E: support@atussu.ie

Eliska is the Vice President of Academic life for 2024/2025. She has just completed her second year and is majoring in International Tourism with Event Management. Eliska has background in student leadership, having served as a Class Representative and the International Officer in the Student Senate.

As Vice President, Eliska is responsible for addressing all educational concerns and ensuring effective communication between students, faculty, and the student senate. She acts as a liaison for class representatives and leads efforts to recruit dedicated and passionate students to join the student senate. Eliska is dedicated to making the Student Representative Council more efficient and responsive.

She will also be actively involved in planning and coordinating campaigns and events aimed at enriching student life, including a variety of social, cultural, and recreational activities designed to make the university experience more enjoyable and fulfilling.

You can reach Eliska by calling into her office in the Student Centre or by contacting her on the details above. She encourages all students to share their ideas, concerns, and suggestions to work together towards creating a supportive and dynamic university environment.

VICE PRESIDENT / WELL-BEING & ENGAGEMENT



Emil Kindl

T: 071 914 1887

E: support@atussu.ie

Emil is responsible for the well-being and engagement of all ATU Sligo students. He will collaborate with the well-being team, medical and counselling services, pastoral care, and various external organizations. Emil's role also includes running informative campaigns regarding mental health, physical health, sexual health, and financial literacy. As the Officer responsible for engagement, he will be closely involved with the management of Clubs and Societies as well as in the organization of extracurricular activities. Emil is your first point of contact for any concerns you may have. Whether it's about accommodation,

personal well-being, or initiatives to enhance the Student Union's functioning. You can visit him in person at the Student Centre office or contact him using the provided details. Emil is here to support you.

Part-time Officers

Part-time Officers are elected to positions of key importance to the Students' Union in line with the constitution. If you would like to know anything about these positions, please feel free to contact the Students' Union and talk to any of the Union Officers.

**Diversity & Inclusion Officer -
To be filled**

**International Students Officer -
Emmanuel Oluwole**

**Mature Student Officer -
Rachael O'Toole**

**Oifigeach na Gaeilge /
Irish Language Officer -
Ciaran Cashin**

**Postgraduate Officer -
Nanshin Nansak**

**Sustainability Officer -
Caoimhe Mc Cormack**

Students' Union Staff

There are three full-time staff members in ATU Sligo Students' Union. Padraic Ryan, CEO; Emma-Louise Evans, Administrator; and Don Donoghue, Head of Democracy, Representation & Engagement.

These staff members work in support of the Union Officers and can be contacted at the Students' Union on the ground floor of the Student Centre, or by emailing support@atussu.ie

Students' Union Shop

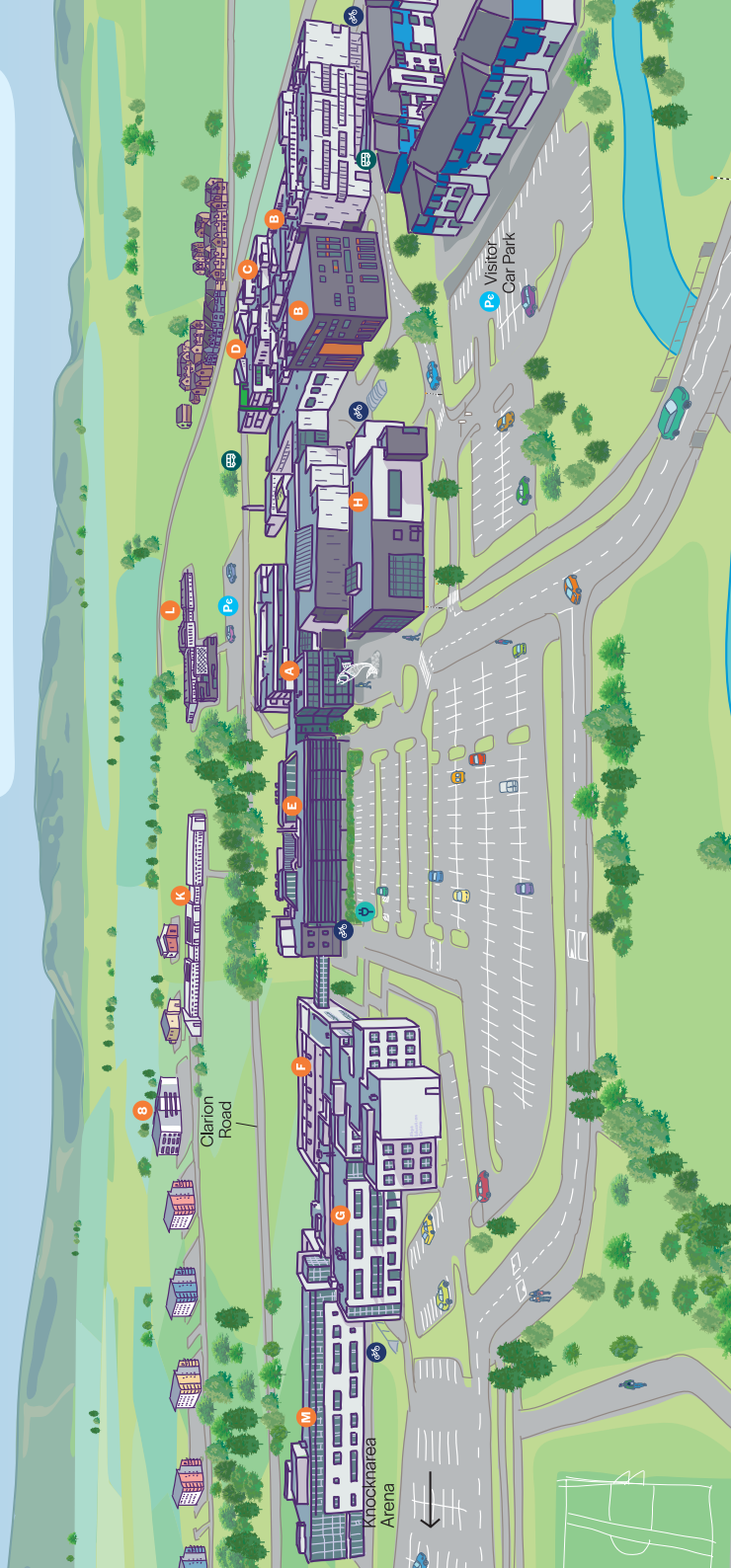
The shop is in the Student Centre and is managed by Gerry Higgins. The shop sells all necessary ATU Sligo course stationery and equipment. It also sells a range of groceries, smoothies, and Starbucks Coffee.





Legend

- | | | |
|---|-----------------------------|-------------------------------------|
| A Main Reception, Administration & Yeats Library | G Innovation Centre | Pe Paid Parking |
| B Science and Canteen | H Student Centre | Pc Car Electric charge point |
| C Business & Social Sciences | K YAADA | B Bus Stop |
| D Business & Social Sciences | L YAADA | B Knocknaree Arena |
| E Engineering & Design | M Applied Technology | B Clarion 8 |
| F Engineering & Design | P Knocknaree Arena | |



Ollscoil
Teicneolaíochta
an Atlantaigh

Atlantic
Technological
University

T: +353 (0)71 93 05222

F: +353 (0)71 91 60475

E: info@atu.ie

W: atu.ie

Ash Lane, Sligo, F91YW50, Ireland

